



CORPORATE BROCHURE

SHIP BUILDING



INTRODUCTION TO WAS

A subsidiary of the PIRIOU group, WEST ATLANTIC SHIPYARD Ltd (WAS) was formed in 2004 in Nigeria and registered in the free zone in 2005.

The shipyard, located on the Bonny River in the Oil and Gas Export Free Trade Zone, Federal Ocean Terminal (FOT) Onne in Rivers State, Nigeria, was set up to build support ships for the offshore oil and gas industry in accordance with the Nigerian Coastal and Inland Shipping Act. In keeping with the spirit of promoting 'local content', over 80 million US dollars has been invested into the facility and its workforce to date. Benefiting from the extensive experience and support of the PIRIOU group, WAS is proud to be the only modern shipbuilding and ship repair facility in the Gulf of Guinea.

WEST ATLANTIC SHIPYARD Ltd is fully ISO 9001:2015 certified.

As a Shipbuilder WAS has been in operation in Nigeria since 2008 and has completed over 45 fabrication projects for vessels that are 100% built within the country to International Class Standard (Bureau Veritas), achieving AAA status. Operating two state-of-the-art 100 metre floating docks and with a 300 metre quayside, WAS also has the capability to launch the vessels built at its facility. The company has a dedicated multi-disciplinary shipbuilding team with the highest level of competencies, which together with its main strategic partnership with PIRIOU, enable the shipyard to satisfy industry demands for safe, reliable and cost effective solutions that meet the most exacting standards in terms of quality and schedule adherence.

STRATEGIC POLICY STATEMENT

Our strategy is to be where our customers need us, by transferring knowledge gained from the mother company (PIRIOU) in France over the past fifty years and developing appropriate skills to achieve sustainable development locally.



WAS AT A GLANCE

CAPACITY

- 2 x floating docks - 110m x 25m - 5000 TLC
- 300m quayside - fully serviced by cranes
- 135 000m² yard space
- 60 000m² area for fabrication facilities and warehousing
- Workshops - 50-ton overhead crane with 25m height
- ISO 9001:2015 ISO management systems - Bureau Veritas certification



HIGH QUALITY

- A robust QA/QC policy & repair management system
- Highly skilled and trained workforce (Expat & Nigerian)
- State-of-the-art equipment and facilities



FAST DELIVERY

- Highly driven efficiency
- Strict adherence to productivity, process & procedures
- Highly skilled project planning
- Ability to work 24/7, 365 days a year



COMPETITIVE PRICES

- Customer-friendly sales policy
- Flexible payment terms
- Excellent procurement and supply chain network
- Master agreement long-term fixed pricing option available



SHIPYARD FACILITY

WAS operates a quayside area of 13500m² with a jetty side of 300m in length with a draft of 6.5m at low tide and 8.5m during high tide, supported with mobile & tower cranes. For docking of vessels, we have two floating docks situated at the south end of the jetty which are strategically double banked. The docks are both 110m long and 25m wide and able to dock vessels with a draft of 6.2m.

The facility boasts 60 000m² of secured storage and fabrication areas on site, as well as four workshops spread over 6000m² for steel & pipe fabrications, mechanical and electrical overhauls and an onsite power station supplying 440V 60Hz stable current 24/7.

The two fabrication halls are designed and built to withstand weights of up to 600t. The largest hall is fitted with 2 x 25t cranes. To date over 45 vessels and numerous large fabrication projects have been facilitated within these halls.

FROM DESIGN TO DELIVERY

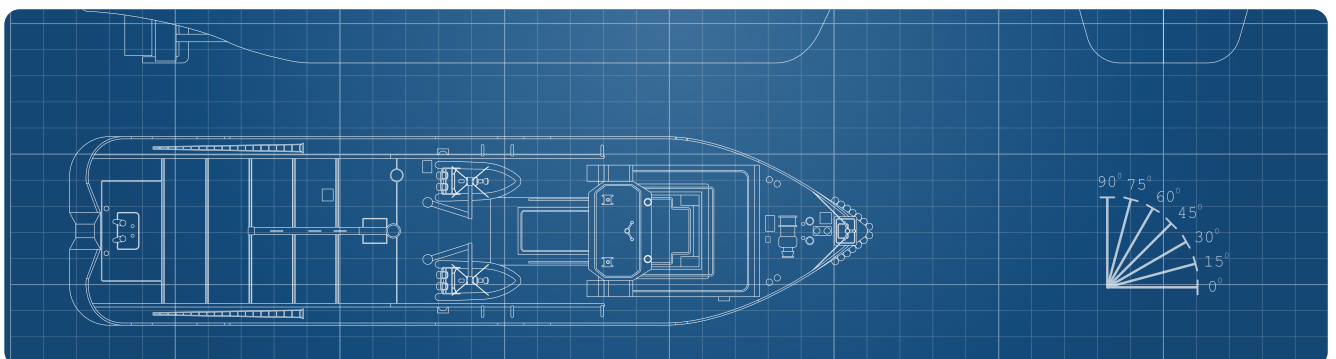
We build ships in steel, aluminium and composite materials, with construction handled by our shipyard in the Oil and Gas Free Zone, Federal Ocean Terminal, Onne Port Harcourt. Whether you're operating in the public, private, civilian or military sector, running a single vessel or a large fleet, we can help. We approach each and every project with the same commitment: delivering quality vessels on time and on budget.

TAILORED TO YOUR NEEDS

We work hard to understand your precise requirements, creating bespoke offers which may be adapted from our existing catalogue or designed from scratch to meet your unique specific criteria.

EXPERT ADVICE EVERY STEP OF THE WAY

Our design specialists, sometimes working in partnership with independent naval architects, work closely with you from the design phase onwards, ensuring that your vessels correspond precisely to your needs, as well as complying with the ever-evolving regulatory requirements.



NAVAL ENGINEERING & DESIGN

We undertake:

- Studies: preliminary studies, design concepts, naval architecture, general and detailed studies,
- Logistics: integrated logistical support, technical assistance, training and procurement services.

HELPING YOU TO FINANCE YOUR PROJECTS

In an increasingly complex financial environment, we can help you to find and secure the financial backing you need.



WELDING AND FABRICATION

Our qualified welders and fabricators possess the skills and knowledge to work within the requirements of all principle IACS member organisations on both steel and aluminium ship repairs, renewals and marine construction. All welder qualifications carry IACS member organisation endorsement and are professionally managed in-house. We employ numerous welder/fabricators that possess multi-positional and thickness qualifications allowing us to carry out welding works on carbon steel, stainless steel, aluminium and duplex using MMA, TIG, MIG and FCAW processes. We utilise modern welding technology and only use calibrated equipment that ensures we work within the parameters of our welding procedure qualifications and specifications. As part of our highly regarded quality management system, we employ an in-house welding coordinator to oversee and implement quality control measures in the delivery of our work. Our welders and fabricators are multi-skilled and experienced at ship repair, marine construction and general welding and repairs to various metalwork and structures. We have extensive experience in providing welding and fabrication services to a variety of customers and our service offering includes:

- Collision repair welding
- Pipe welding
- Shell plate and structural metalwork replacement
- New build fabrication and installation of steel and aluminium superstructures and other modules
- New build fabrication and installation of ladders and stairways
- Repairs to handrails and other deck fixtures
- Repairs and improvements to substandard works carried out by other contractors





FRB 720



FAST TENDER



This Fast Rescue Boat originally designed for Offshore Support Vessels on board installation is also adapted to short distance crew transfers thanks to her standardized bow landing.

Compliant with the International Life Saving Appliance code (LSA code), the FRB 720 is a real sea-going performing boat boarding up to 10 persons and arranged to receive a stretcher.

Equipped with a single engine and waterjet propulsion, this 7 metres aluminium hull boat reaches a 28 knots top speed and its 0.58 m draught allows sailing in shallow waters.

- PIRIOU design
- Life Saving Appliance code (LSA code) at highest standard
- Strong and robust aluminium hull construction
- Easy and safe crew transfer thanks to built-in bow landing
- Off load hook for quick release from davit
- Arrangement for 1 stretcher for rescue operations
- Optimized power-to-weight ratio enabling high maximal speed
- Shallow draught allowing access and operations near the shore and in deltas

FRB 720

FAST TENDER



MAIN CHARACTERISTICS

Length overall	7.28 m
Breadth (incl. fenders)	2.71 m
Draught	0.58 m
Air draught	2.75 m
Hull / superstructure	aluminium
Fuel oil capacity	175 l
Light displacement with fuel oil	2,775 kg
Total weight with 10 p.	3,600 kg
Rule capacity (FRB)	9 persons
Stretcher	1

SPECIAL EQUIPMENT

Bow fender	250 mm heavy duty
Side fender	Ø 250 mm
Self righting roll bar	1
Waterjet protection frame	1
Off load hook	1
Towing bollard on transom	2
VHF	1
Safety equipment	according to rules

CLASSIFICATION

IMO LSA Code - Resolution MSC.48(66)
Testing & Evaluation of Life-Saving Appliances - Resolution MSC.81(70)
MED A. 1/1.20 EU directive 96/98/EU
as amended by EU directive 2010/68/EU delivered by BV

PERFORMANCES

Speed with 3 persons on board	28 kn
Speed with 10 persons on board	23 kn

PROPULSION / MACHINERY

Propulsion	
Engine	1 x 191 kW (260 HP) Diesel
Propulsion	1 waterjet
Intermediate shaft	1
Machinery	
Batteries	2 x 100 Ah

FPSV 19w



THE ULTRA FAST CREW BOAT



The FPSV 19w benefits from PIRIOU's 25 years experience in delivering more than 100 aluminium fast crew boats to the offshore oil and gas industry.

Dedicated to crew operations, the FPSV 19w comes with a standardized V-shape and shock absorbent bow landing for safer transfer of personnel. With a 23 m² cargo deck, 30 industrial personnel seating and 2 crew, she sails at very high speed thanks to an optimized hull design.

This 19 meters aluminium vessel is equipped with twin engines coupled with waterjet propulsion offering high maneuverability and a top speed of 35 knots.

- PIRIOU design
- V-shape bow landing for safe and easy crew transfer
- Optimized power-to-weight ratio thanks to aluminium construction
- Ultra high speed to shorten transit time
- Spacious lounge area offering seating for 30 industrial personnel
- 23 m² cargo deck with 4 tons loading capacities
- Fuel-efficient hull design granting economical operations
- Shallow draft allowing access and operations near the shore and in deltas

FPSV 19w

THE ULTRA FAST CREW BOAT



MAIN CHARACTERISTICS

Length overall	19.28 m
Breadth	4.95 m
Gross tonnage (approx.)	60 UMS
Draught	0.9 m
Hull / superstructure	aluminium
Cargo deck area	23 m ² @ 1.5 t/ m ²
Deck load	4 t
Crew	2
Industrial personnel	30
On-board gasoil	3300 l
Fresh water (domestic)	390 l
Grey/black waters	0.1 m ³
Fire Fighting (internal) CO ₂	all machinery
Fire detection (smoke)	all areas

OPTIONS

Patrol/security pack	
Business class seats	
Resiliently mounted cabin	
Night vision camera	
Fire fighting (external)	300 cbm/h

CLASSIFICATION

Bureau Veritas	⊗ HULL • MACH
Crew boat	
Sea area 2	

ACCOMMODATION

Fully air conditioned	
Toilet	1
Lounge	1
Entertainment video network	

PERFORMANCES

Speed @ 9.7 DWT	28 kn
Speed @ 4.32 DWT	35 kn

PROPULSION / MACHINERY

Propulsion	
Engines	2 x 662 kW @ 2100 rpm
Propulsion	2 waterjets
Machinery	
Generator set	1 x 28 kVA

0315 All particulars believed to be correct but not guaranteed / PIRIOU 2015 ©

www.pirou.com

PIRIOU – ZI du Moros – 29185 Concarneau – France

Tel +33(0)2 98 97 09 48 – commercial@piriou.fr



FPSV 41P



THE FAST CREW BOAT WITH SUBSTANTIAL DECK LOAD



Concentrate of 25 years experience in fast crew boats, the FPSV 41P is designed with seating for 80 personnel and a cargo deck of 100 m². She is the perfect vessel for operations such as rig crew transfer, quick transportation of supplies and in field support.

Made of aluminium and equipped with 3 engines coupled to fixed pitch propellers and a 80 m³ fuel oil capacity, the FPSV 41P offers a range in excess of 3,000 NM. Her speed of 25 knots meets most of the requirements and guarantees a quick transfer of personnel.

Extremely versatile, her layout can be adapted for in field patrol operations by replacing the lounge seating with cabins and a mess for security personnel.

- PIRIOU design
- Spacious lounge area offering seating for 80 industrial personnel
- 100 m² cargo deck with a 50 tons capacity
- Economical operations thanks to a fuel efficient hull design
- High speed to transfer crew and supply faster and further away
- Optimized bow offering reduced slamming in rough seas
- Shallow draft allowing access and operations near the shore and in deltas
- Excellent panoramic visibility for safety and easy manoeuver

FPSV 41P

THE FAST CREW BOAT WITH SUBSTANTIAL DECK LOAD



MAIN CHARACTERISTICS

Length overall	42 m
Breadth	8.2 m
Draught	1.95 m
Hull / superstructure	aluminium
Cargo deck area	100 m ² @ 2 t/m ²
Deck load	50 t
Crew	10
Industrial personnel	80
Fuel oil	80 m ³
Fresh water	20 m ³
Grey/black waters	2 m ³
Fire fighting (internal) CO ₂	all machinery

OPTIONS

Engine upgrade	3 x 1342 kW
Fire fighting capacity	Fi-Fi 1
Dynamic positioning	DP 1
Security pack / patrol	
Ballistic protection panels	
Business class seats	
Sickbay	
Deck crane	

CLASSIFICATION

Bureau Veritas I ✕ HULL • MACH
Crew boat
Sea area 3

ACCOMMODATION

Fully air conditioned	
Cabins for 1 person	2
Cabins for 4 persons	2

PERFORMANCES

Full load speed (100 % MCR full load)	18 kn
Max. speed (85 % MCR light trial load)	25 kn
With optional 3 x 1342 kW engine configuration:	
Full load speed (100 % MCR full load)	23 kn
Max. speed (80 % MCR light trial load)	28 kn

PROPULSION / MACHINERY

Propulsion

Engines	3 x 1007 kW @ 1900 rpm
Propulsion	3 FPP
Bow thruster	1 x 90 kW

Machinery

Generator sets	2 x 110 kVA
----------------	-------------

FPSV 53P/W



FAST PAX & SUPPLY VESSEL 53P/W



The FPSV 53 benefits from PIRIOU's 25 years experience in delivering more than 100 aluminium fast crew boats to the offshore oil and gas industry.

The FPSV 53 is a highly versatile vessel able to perform multiple functions as in field support, crew transfer and supply. With a 240 m² cargo deck, 80 industrial personnel seating and living quarters for 10 crew, her fuel-efficient hull design enables to sail in a very comfortable manner.

This 55 metres aluminium vessel is equipped with four engines. While the waterjet configuration grants a top speed of 30 knots, more manoeuvrability and safety thanks to DP2 and Fi-Fi 1 notations, the fixed pitch propeller version offers a 25 knots light load and a 19 knots full load speed.

- Proven design by PIRIOU
- 240 m² cargo deck with a 226 tons capacity
- DP2 for high manoeuvrability and safer operations
- High speed to transfer crew and supply faster and further away
- Long range autonomy thanks to large tank capacities
- Optimized bow offering reduced slamming in rough seas
- Shallow draft allowing access and operations near shore and in deltas
- Excellent panoramic visibility for safety and easy manoeuvre

FPSV 53P/W

FAST PAX & SUPPLY VESSEL 53P/W



MAIN CHARACTERISTICS

Length overall	55.1 m
Breadth	10 m
Gross tonnage (approx.)	470 UMS
Draught	2.35 m
Air draft	13 m
Hull and superstructure	aluminium
Cargo deck area	240 m² @ 2.5 t/m²
Deck load	226 t
Crew	10
Industrial personnel	80
Gasoil	140 m³
Fresh water cargo	105 m³
Fresh water (domestic)	8 m³
Grey/black waters	4 m³

OPTIONS

	FPP	Waterjets
Dynamic positioning 1	●	-
Dynamic positioning 2	-	○
Sickbay	●	●
Fire Fighting (Fi-Fi 1)	●	○
Business class seats	●	●
FRC/quick launch davit	●	●

○ included ● option - not available

CLASSIFICATION

Bureau Veritas I ✕ HULL ✕ MACH
 Crew boat
 SDS
 Sea area 3
 DYNAPOS AM/AT R*
 Fire Fighting ship 1 - water spraying*
**FPSV53w only*

ACCOMMODATION

Fully air conditioned	
Cabins for 2 persons	4
Cabins for 1 person	2

PERFORMANCES

	FPP	Waterjets
Crew+full capacities+pax+cargo	19 kn	20 kn
Crew+full capacities	25 kn	30 kn

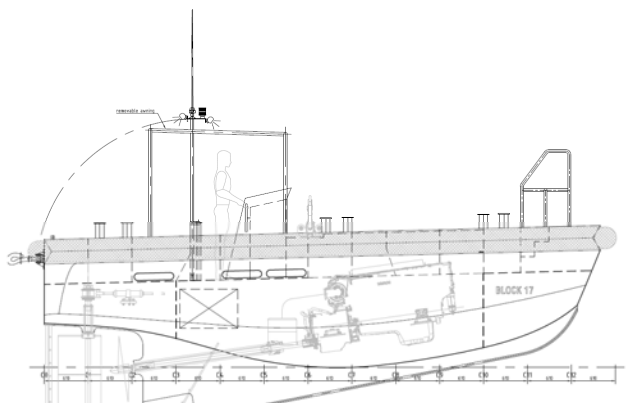
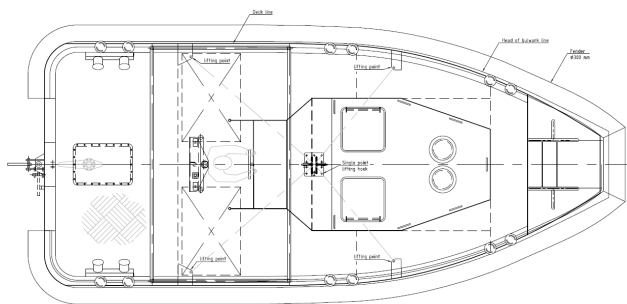
PROPULSION / MACHINERY

	FPP waterjets	Waterjets
Engines	4 x 1342 kW @ 1900 rpm	
Generator sets	2 x 178 kVA	
Propulsion	4 x FPP	4 x waterjets
Bow thrusters	1 x 150 kW	2 x 150 kW

'WORKBOAT'



WORKBOAT - 7.7 m



Workboat suitable for maritime works and tanker offloading operations

- PIRIOU design
- Lifting with a single point or 4 pad eyes
- Towing hook with 3.2t capacity
- Suitable bow landing for safe and easy crew transfer
- 9 knots

'WORKBOAT'

WORKBOAT - 7.7 m

MAIN CHARACTERISTICS

Length overall	7.7 m
Breadth	3.4 m
Depth at main deck	1.16 m
Fuel oil	2 x 400 l
Hull	aluminium
Speed	9 kn

SPECIAL EQUIPMENT

Starboard, port and bow fenders	diam. 300
Suitable bowlanding for crew transfer	
Aft removable bimini	

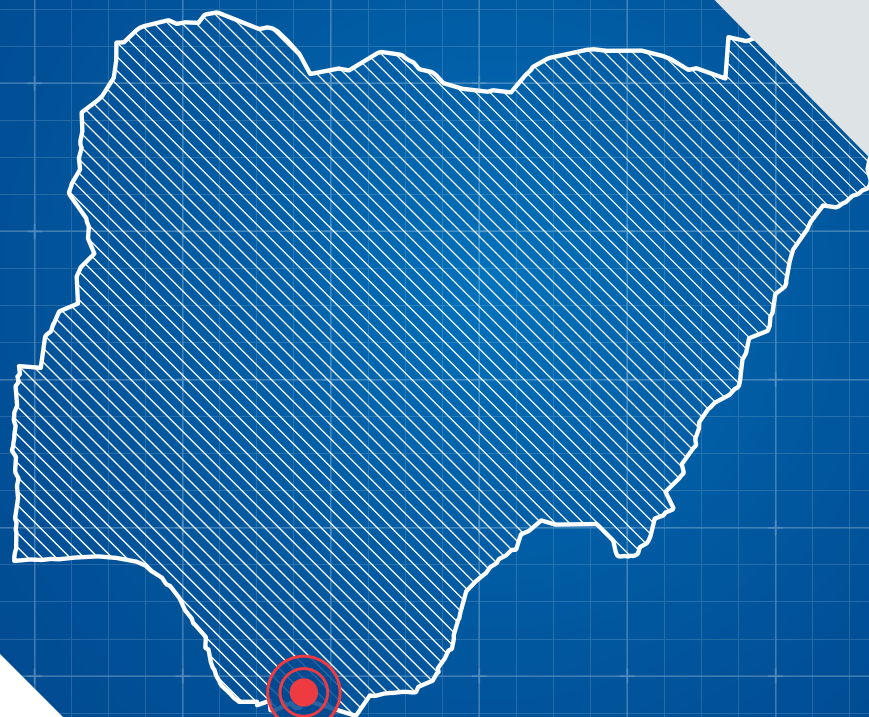
Lifting

Lifting hook	8 t
Towing hook	3.2 t
Pad eyes with slings	4

PROPULSION / MACHINERY

Diesel engine	400 CV - 2100 rpm
Shaft alternator	
Propeller	Ø 1000 mm

NIGERIA



**PORT HARCOURT
PORT ONNE**



WEST ATLANTIC SHIPYARD

WEST ATLANTIC SHIPYARD

Oil & Gas Free Zone
Federal Ocean Terminal (FOT)
Onne - Port Harcourt - Rivers State
Nigeria

E-MAIL:
was@was-shipyard.com

TELEPHONE:
+234 805 710 0909

www.was-shipyard.com

ISO 9001

BUREAU VERITAS
Certification



NIGERIAN COMPANY ESTABLISHED IN 2005