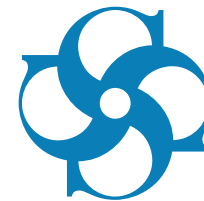


WE'RE BUILDING FUTURE



• www.sefine.com.tr



SEFINE
SHIPYARD



***“WORLDWIDE BUSINESS
WITH SEFINE SHIPYARD”***

// NEW BUILDING

// SHIP REPAIR

// CONVERSION

**// MEGA STEEL
CONSTRUCTION**



Welcome

Sefine Shipyard is a customer-focused, international shipbuilder building innovative ships, providing fast-professional ship repair services and ship conversions with excellent quality. Aiming to become a global market player in marine business we want to sustain the quality, innovation and reliability while keeping employees in a safe working environment.

Demir Koloğlu / General Manager



KOLIN GROUP

www.kolin.com.tr

Kolin Group is the biggest share holder of Sefine Shipyard.
The holding is based on a construction company founded in 1977.

Annual turnover: 3,2 billion USD

Total number of workers: 60.000 employees

Scope of Activities:

CONSTRUCTION



ENERGY



PORT MANAGEMENT



SHIPYARD MANAGEMENT



MINING



TOURISM



COMMERCE



INDUSTRY





SEFINE
SHIPYARD





ABOUT SEFINE

WE'RE BUILDING FUTURE

Founded in 2005 and occupying over 140.000 m2 of land for newbuilding, repair-maintenance and conversion, Sefine Shipyard is one of the leading establishments in Yalova region with over 350 yard employees excluding subcontractor personnel.

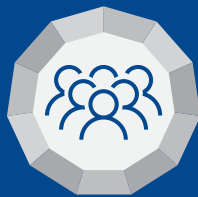
The shipyard is able to undertake ship repair services up to 90.000 DWT on its Post-Panamax size graving dock and up to 120.000 DWT on its Aframax size floating dock.

On the other hand, Sefine has the technical ability and physical capacity to perform new building of various types of ships such as General Cargo Vessels, Double Ended Car&Passenger Ferries, Offshore Vessels, Search&Rescue Boats, AHTs, Tug Boats and Live Fish Carriers.

Having increased its revenue by 300% between 2012 and 2015, the shipyard became the 40th fastest growing company in 2016 Union of Chambers and Commodity Exchanges of Turkey's top 100 listing.

INVESTMENTS & CAPABILITIES

First Class Shipyard



EMPLOYEES

3.000 employees
with subcontractors



TOTAL AREA

140.000 sqm



LIFTING

Slipway Crane,
2x200 tons Gantry Crane, h:64 m



DOCK

Aframax & Post - Panamax



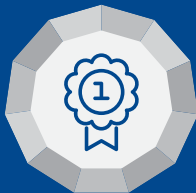
SLIPWAY

160m x 60m up to 40.000 dwt



HIGH TECHNOLOGY

Refine R & D Center



HIGH QUALITY

ISO & OHSAS Certificates



ECO FRIENDLY

Focusing on EcoShips

FACILITIES



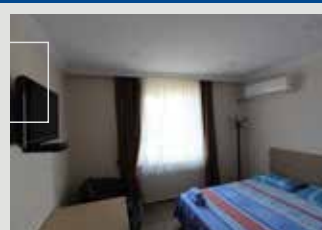
Conversion Steel Construction Hall
1.200 sqm

Steel Prefabrication Workshop
1.760 sqm



Pipe Workshop
300 sqm

Guest Rooms



Slope /Sludge Discharging Facility
350 m³

Block Construction Halls
8.000 sqm

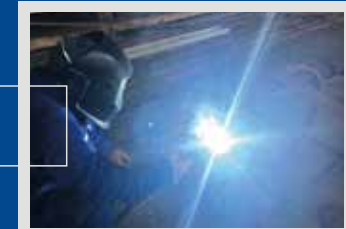


Mechanical Workshop
1.000 sqm



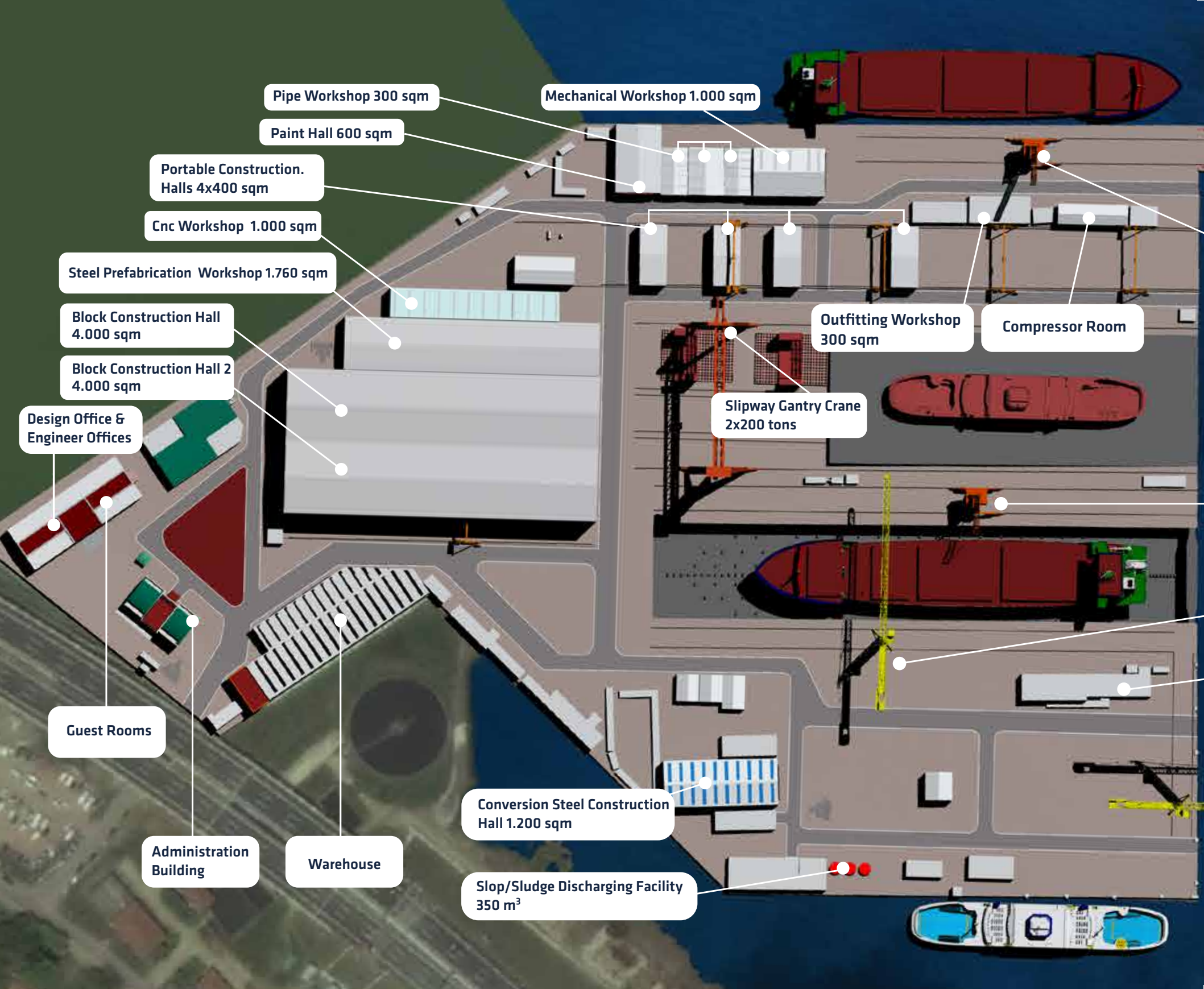
CNC Workshop
1.000 sqm

Outfitting Workshop
300 sqm



Warehouse
4.530 sqm





Pipe Workshop 300 sqm

Mechanical Workshop 1.000 sqm

Paint Hall 600 sqm

Portable Construction.
Halls 4x400 sqm

Cnc Workshop 1.000 sqm

Steel Prefabrication Workshop 1.760 sqm

Block Construction Hall
4.000 sqm

Block Construction Hall 2
4.000 sqm

Design Office &
Engineer Offices

Outfitting Workshop
300 sqm

Compressor Room

Slipway Gantry Crane
2x200 tons

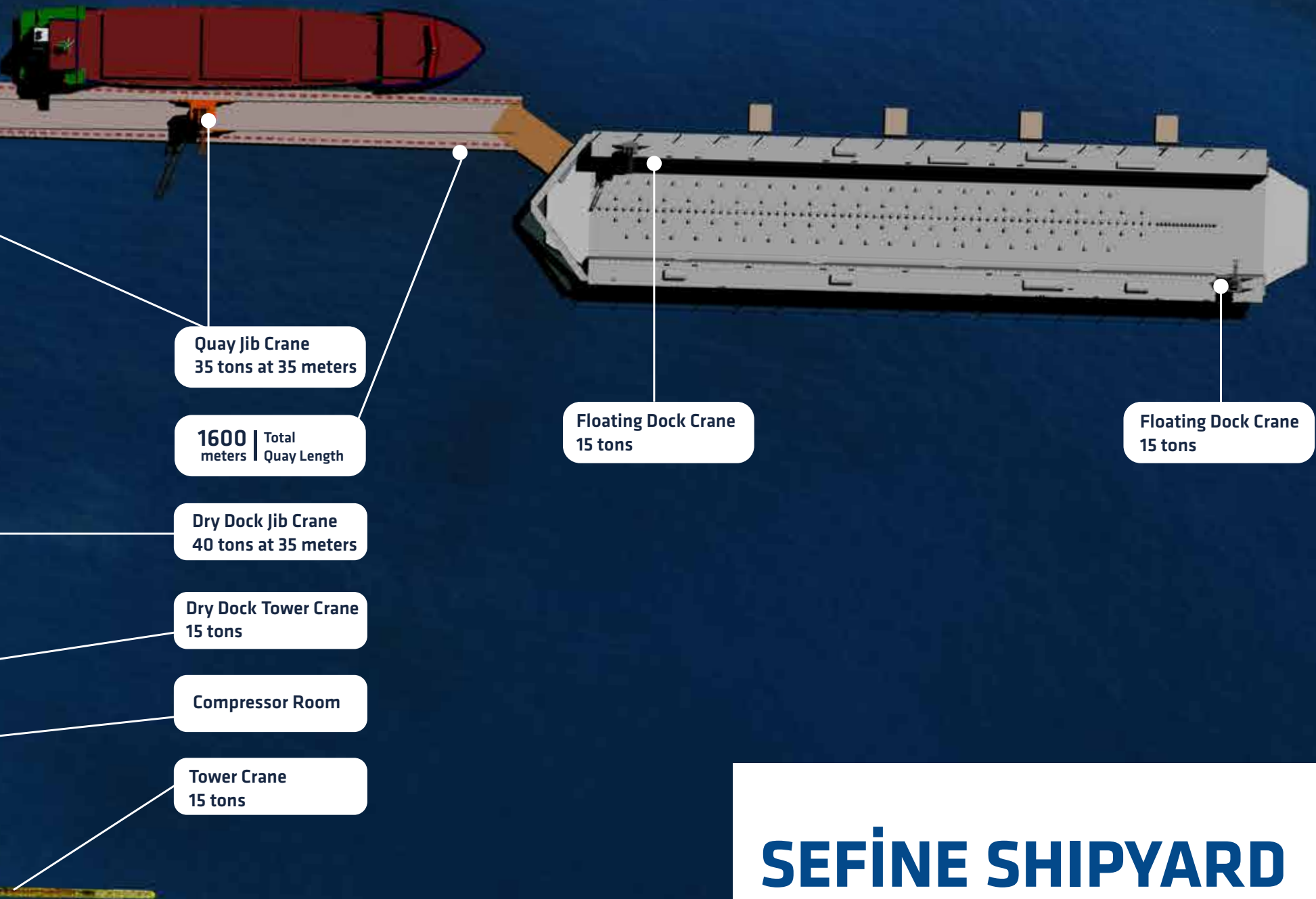
Guest Rooms

Administration
Building

Warehouse

Conversion Steel Construction
Hall 1.200 sqm

Slop/Sludge Discharging Facility
350 m³



SEFINE SHIPYARD LAYOUT





NEW BUILDING

Sefine Shipyard's success story begins with the deliveries of General Cargo Vessel series of 13.000 DWT, 16.5000 DWT and 26.000 DWT between 2010 and 2012 to its Dutch client. Meanwhile, within the same period, deliveries of four 80 cars capacity Double Ended Ferries to a Turkish ferry operator, two 22 m self-righting aluminium SAR boats to Turkish Directorate General of Coastal Safety and one 49,6m shallow water, icebreaking AHT "Arctic" to a Russian-English joint venture took place all together. In 2013 the shipyard delivered a 60 tons bollard pull ATD Tug Boat to its Turkish owner successfully.





2014 was a significant milestone for Sefine which marks the first turn-key ferry deliveries to Norway from Turkey, namely 70 cars capacity Double Ended Ferry “M/F Ibestad” and 25 cars capacity Ferry “M/F Kvernsund”. Next year, in 2015, two more turn-key ferry deliveries to Norway took place, the 38 and 40 cars capacity double-enders “M/F Ytterøy” and “M/F Utne”. Another important project completed in 2015 was the “M/V Gasø Viking”, a 3000 m3 capacity Live Fish Carrier, again for a Norwegian client. The 200 tons bollard pull Emergency Response and Rescue Vessel “M/V Nene Hatun” was the last succesful delivery in 2015, to Turkish Directorate General of Coastal Safety.





Next to Norwegian ferry market, again other first turn-key deliveries were achieved by Sefine to the Baltic region in 2016 and 2017. 150 cars capacity double-enders “M/F Leiger” and “M/F Tiiu” set sail from Yalova to Tallinn, which will be operated by the Estonian Port Authority, Port of Tallinn. Meanwhile, 200 cars capacity double-enders “M/F Bastø IV” and “M/F Bastø V” reached their homeports Horten, Norway in 11 days, after departed from Sefine Shipyard, Yalova. By 2018, four 3500 m3 capacity Live Fish Carriers (Norway), one 290 cars capacity LNG/Diesel Electric Hybrid double-ender (Italy) and three 83 cars capacity Battery/Diesel-Electric plug-in Hybrid double-enders (Norway) are under construction in Sefine Shipyard.





Dry Dock

240m x 42m

Slipway

160m x 60m

Floating Dock

282m x 47m





Wharf Total

1.600m

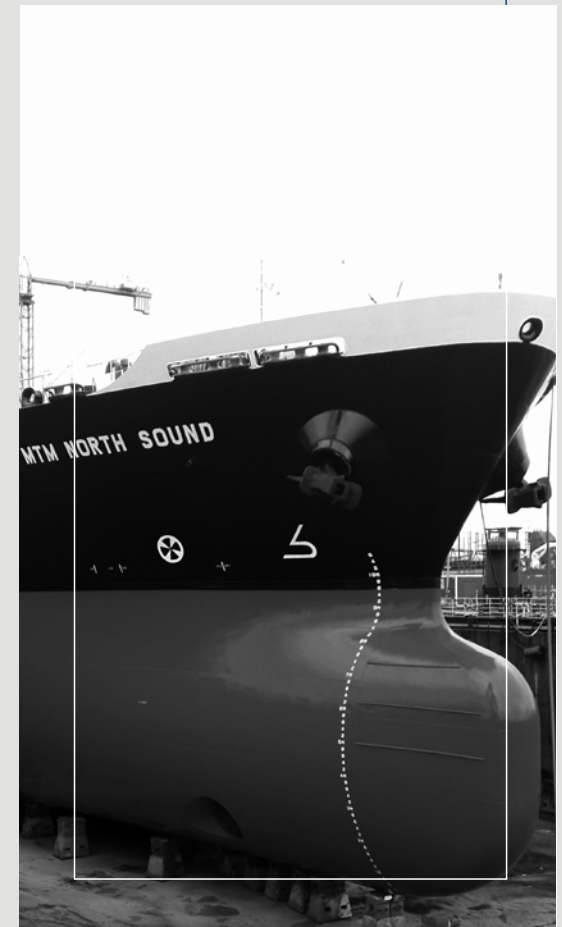
We're
Building Future



SHIP REPAIR & MAINTENANCE

Sefine Shipyard, Turkey's premier shipyard, continues to develop and strengthen the yard's capacity and capabilities in ship repair services in response to client needs. Sefine Shipyard purchased an aframax capacity floating dock which is 282 meters in length and 47 meters wide and boasted a lifting capacity of 40.000 tonnes, making it one of the largest dock in Turkey. This new floating dock will increase Sefine Shipyard's capacity and capabilities to accommodate up to aframax size Tankers; mini cape size bulker; 10.000 TEU Container; aframax size Gas Carrier; aframax size Ro-Ro, Cruisers, Passanger carriers etc. for repair and maintenance.

The dock can accommodate up to 120.000 DWT vessels. Together with the existing 90.000 DWT capacity of Graving Dock, Sefine Shipyard is able to undertake the entire range of ship repair services up to 210.000 DWT. Sefine Shipyard is strongly committed to serving the clients better while guaranteeing the highest quality, maximum safety and on-time delivery at competitive costs.





DOCKING SERVICE

	SFN DOCK 1 Graving	SFN DOCK 2 Floating
LENGTH (M)	240	282
INNER WIDTH (M)	42	47
CAPACITY (DWT)	90.000	120.000
SIZE	Post Panamax	Aframax
TOTAL QUAY LENGTH		1600m





NACC STAR



5

CONVERSION

Cement Carrier

Converted from Bulk Carrier to Cement Carrier.
800 tons steel renewal.
Equipped with special pneumatic loading / discharging system.

Livestock Carrier

Converted from Container Vessel to Livestock Carrier.
Total 1800 tons new steel fabricated 9 cargo deck.

Side Crane Installation

Converted from 4 pcs cargo crane to 2 pcs SIDE CRANE
2 pcs 30 tons SWL Liebherr Side Crane Installation.
2 pcs 915 kW Diesel Generator Installation.





STEEL CONSTRUCTION



IGA 3RD AIRPORT OF ISTANBUL

Structural steel works amount of 15.000 tons were carried out by Sefine Shipyard.

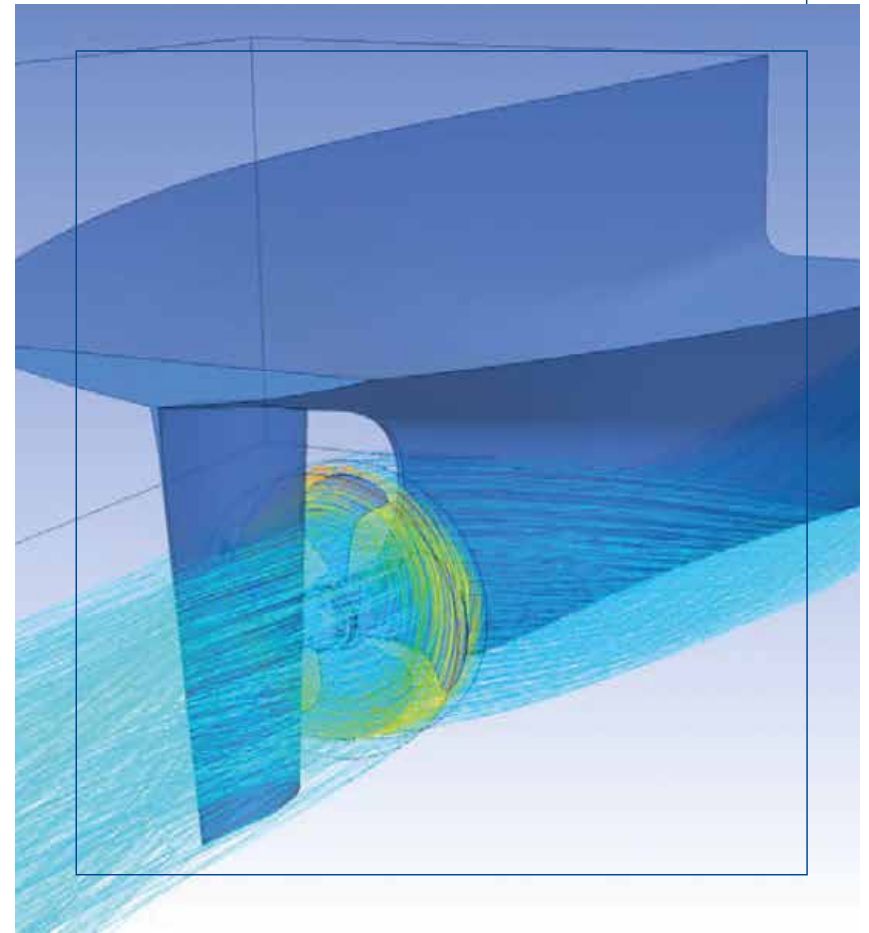
OSMANGAZI BRIDGE

Steel construction works of Istanbul-Izmir Motorway South Approach Viaduct were carried out by Sefine Shipyard. Project started in 2013 and 17.000 tons of steel processed in 16 months.



RESEARCH & DEVELOPMENT

Sefine Shipyard has established an inhouse R&D Department in order to research and develop solutions for yard needs or entire marine sector. In scope of this department, many tasks can be planned in large variety such as ship production, repair, conversion, management processes or prototype products. Meanwhile, different ship concepts can be developed by this department.



QUALITY MANAGEMENT

Quality Makes Difference...



HEALTH & SAFETY

- Occupational Health & Safety (OHS) Policy
- Continuously improve and develop OHS system.
- Working in accordance with current OHS system rules and regulations.
- Specifying and applying OHS system precautions in our activities.



ENVIRONMENT

Sefine Shipyard using non-hazardous material and technologies to protect environment and human health.

LOCATION





Address

Hersek Mah. Ipekyolu Cad. No: 7
77700 Altinova - Yalova / Turkey

Phone

+90 226 815 36 36

Fax

+90 226 815 36 37

E-Mail

E-mail for Ship Repair

shiprepair@sefine.com.tr

E-mail for Ship Conversion

shipconversion@sefine.com.tr

E-mail for New Building

newbuilding@sefine.com.tr

www.sefine.com.tr



/SefineShipyard



/sefineshipyard



/sefineofficial



/sefineshipyard



/SefineShipyard