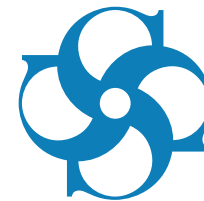


SHIP REPAIR & CONVERSION



• www.sefine.com.tr



SEFINE
SHIPYARD



***“WORLDWIDE BUSINESS
WITH SEFINE SHIPYARD”***

SHIP REPAIR & MAINTENANCE

shiprepair@sefine.com.tr

Sefine Shipyard, Turkey's premier shipyard, continues to develop and strengthen the yard's capacity and capabilities in ship repair services in response to client needs. Sefine Shipyard purchased an afra-max capacity floating dock which is 282 meters in length and 47 meters wide and boasted a lifting capacity of 40.000 tonnes, making it one of the largest dock in Turkey. This new floating dock will increase Sefine Shipyard's capacity and capabilities to accommodate up to aframax size Tankers; mini cape size bulker; 10.000 TEU Container; aframax size Gas Carrier; aframax size Ro-Ro, Cruisers, Passenger carriers etc. for repair and maintenance.

The dock can accommodate up to 120.000 DWT vessels. Together with the existing 90.000 DWT capacity of Graving Dock, Sefine Shipyard is able to undertake the entire range of ship repair services up to 210.000 DWT. Sefine Shipyard is strongly committed to serving the clients better while guaranteeing the highest quality, maximum safety and on-time delivery at competitive costs.

	SFN DOCK 1 Graving	SFN DOCK 2 Floating
LENGTH (M)	240	282
INNER WIDTH (M)	42	47
CAPACITY (DWT)	90.000	120.000
SIZE	Post Panamax	Aframax
TOTAL QUAY LENGTH		1600m



FACILITIES

Shipyard Area
140.000 sqm



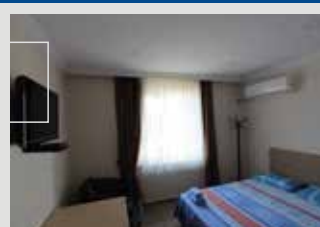
Conversion Steel Construction Hall
1.200 sqm

Steel Prefabrication Workshop
1.760 sqm



Pipe Workshop
300 sqm

Guest Rooms



Slope /Sludge Discharging Facility
350 m³



Mechanical Workshop
1.000 sqm

Block Construction Halls
8.000 sqm



CNC Workshop
1.000 sqm

Outfitting Workshop
300 sqm



Warehouse
4.530 sqm



BALLAST WATER TREATMENT SYSTEM

Blue Ocean

First BWT Retrofit System Installation in Turkey

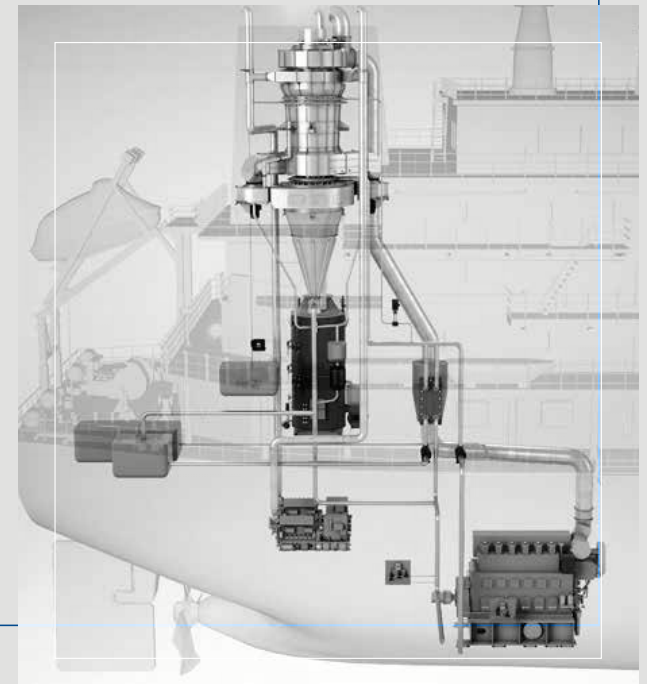
Capacity: 500 cbm/hr



SCRUBBER INSTALLATION

Blue Sky

We are ready to become a trusted partner for scrubber solutions with excellent facilities, high quality and fast workmanship.





Pipe Workshop 300 sqm

Mechanical Workshop 1.000 sqm

Paint Hall 600 sqm

Portable Construction.
Halls 4x400 sqm

Cnc Workshop 1.000 sqm

Steel Prefabrication Workshop 1.760 sqm

Block Construction Hall
4.000 sqm

Block Construction Hall 2
4.000 sqm

Design Office &
Engineer Offices

Outfitting Workshop
300 sqm

Compressor Room

Slipway Gantry Crane
2x200 tons

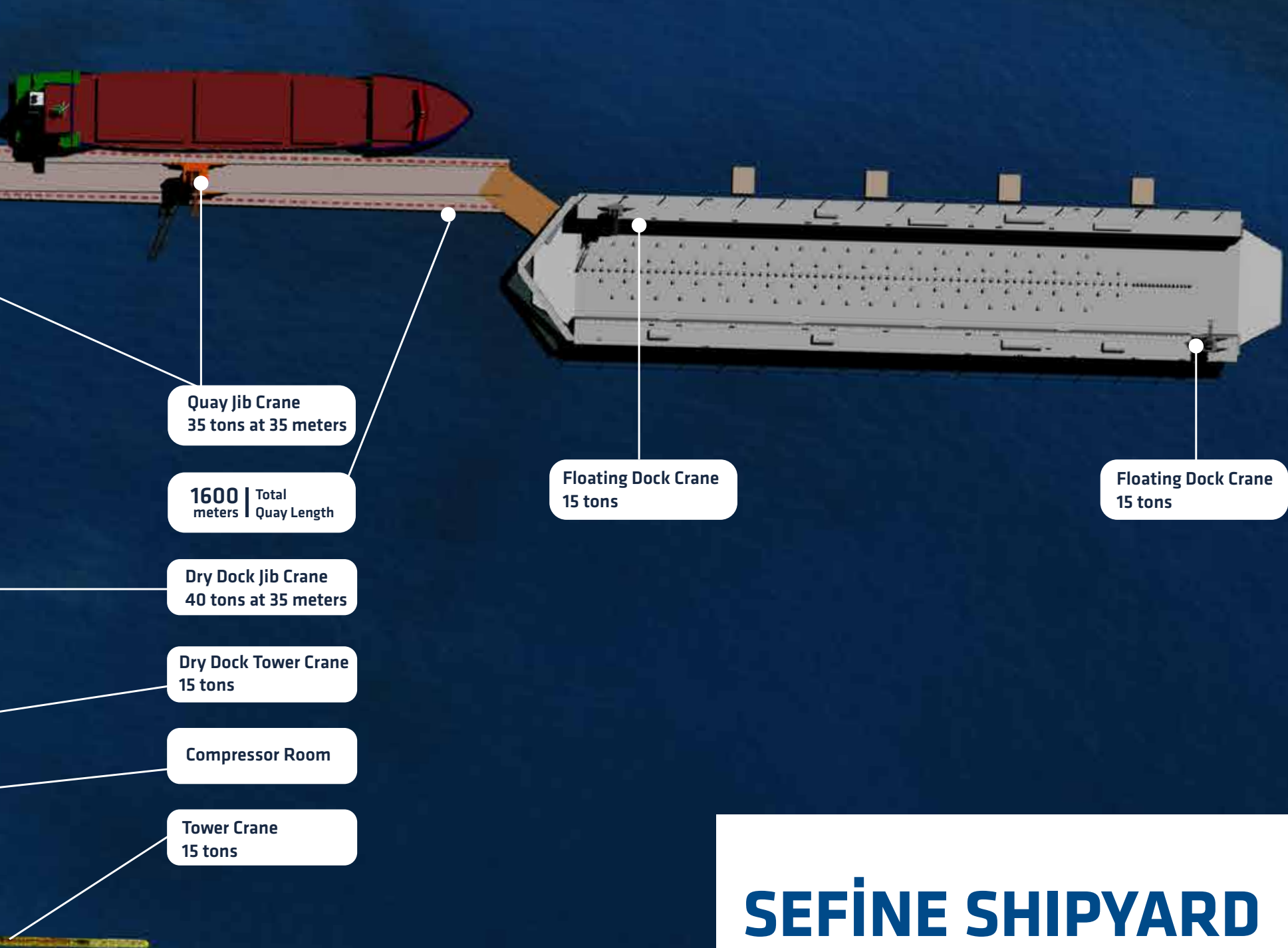
Guest Rooms

Administration
Building

Warehouse

Conversion Steel Construction
Hall 1.200 sqm

Slop/Sludge Discharging Facility
350 m³



Quay Jib Crane
35 tons at 35 meters

1600 | Total
meters Quay Length

Dry Dock Jib Crane
40 tons at 35 meters

Dry Dock Tower Crane
15 tons

Compressor Room

Tower Crane
15 tons

Floating Dock Crane
15 tons

Floating Dock Crane
15 tons

SEFINE SHIPYARD LAYOUT



CONVERSION

shipconversion@sefine.com.tr

SEFINE is well-equipped with the high-quality facilities and dry dock to serve our clients full range of service in Ship Repair and Conversion Business.

We can offer competitive price, in-house design engineering and high quality workmanship for our clients to all kinds of conversion projects with our experienced project leaders and highly skilled design engineers.



CEMENT CARRIER

Converted from Bulk Carrier to Cement Carrier .
The vessel was shortened 10 meter from parallel
body.
850 tons steel renewal
Equipped with special pneumatically loading
/ discharging system.

- ★ Sider Vega
- ★ Nacc Star (10 meters shortened.)
- ★ Nacc Poros
- ★ Nacc Itaca
- ★ Nacc Alicudi
- ★ Nacc Toronto
- ★ Sider Alicudi



Bulk Carrier



Cement Carrier



LIVESTOCK CARRIER

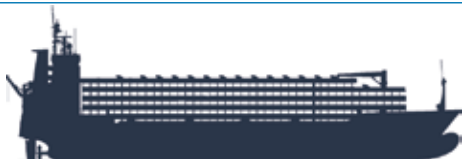
Converted from Container Vessel to Livestock Carrier.

Total 1800 tons new steel fabricated
9 Cargo Deck.

★ Haidar
★ Queensland



Container Vessel



Live Stock Carrier



SIDE CRANE INSTALLATION

Converted from 4 pcs cargo crane to 2 pcs
SIDE CRANE
2 pcs 30 tons SWL Liebherr Side Crane Installation
2 pcs 915 kW Diesel Generator Installation

- ★ Petra I
- ★ Petra II
- ★ Petra III
- ★ Oxana - V
- ★ Petra Star
- ★ Tatiana P
- ★ Vera P



BULKER

The Highest Grit Blasting Capacity



Graving Dock:
40 nozzle capacity

Floating Dock:
60 nozzle capacity

Total:
- 100 nozzle capacity
- Upto 2500 bar HPWJ
- Simultaneously 40 Pumps painting capacity

80.000 DWT Bulk Carrier
Full blasting of Hull:
60% blasting of Cargo Holds

**8 days total
repair period**





INCE SHIPPING



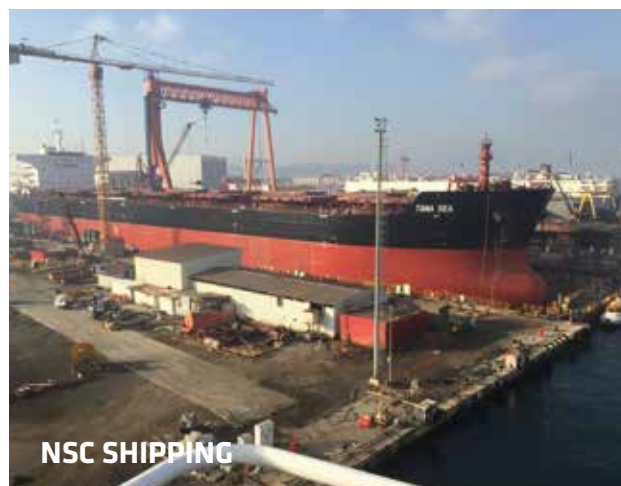
GESTIONI ARMATIRIALI



NORBULK SHIPPING



ACTIVE SHIPPING



NSC SHIPPING



LPL SHIPPING



ENTERPRISES SHIPPING

TANKER

Cargo Pump Overhaul
PV Valves
Cargo Tank Coating
Ballast Tank Coating
(Grit Blasting to SA2,5 – upto 2500 bar HPWJ)
Silicon Painting
Clad Steel Renewal





CONTAINER SHIP

Steel works

50 tons hatch cover steel works + 40 tons ballast tank steel works = 19 days

Hatch Cover Operation

All hatch covers will be on shore within first 24 hours.



TRF SHIP MANAGEMENT-NSC SHIPPING



D'AMICO ISHIMA



LUBECA MARINE



COLUMBIA SHIPMANAGEMENT



12 HOURS AFTER ARRIVAL



12 HOURS AFTER ARRIVAL



24 HOURS AFTER ARRIVAL



MAERSK LINE

RO - RO / CAR CARRIER

Ramp Repair.

Deck Blasting & Painting.

Silicon Painting Repair.



OSM SHIP MANAGEMENT



FLEET MANAGEMENT

GRIMALDI LINES





GRIMALDI LINES



GRIMALDI LINES



UN RO - RO

OTHER TYPES

- ★ ALUMINIUM HULL CATAMARAN FERRY
- ★ WOOD CHIP CARRIER
- ★ LPG CARRIER
- ★ HEAVY LIFTER



- ★ JACK UP PLATFORM
- ★ DREDGER
- ★ POWERSHIP

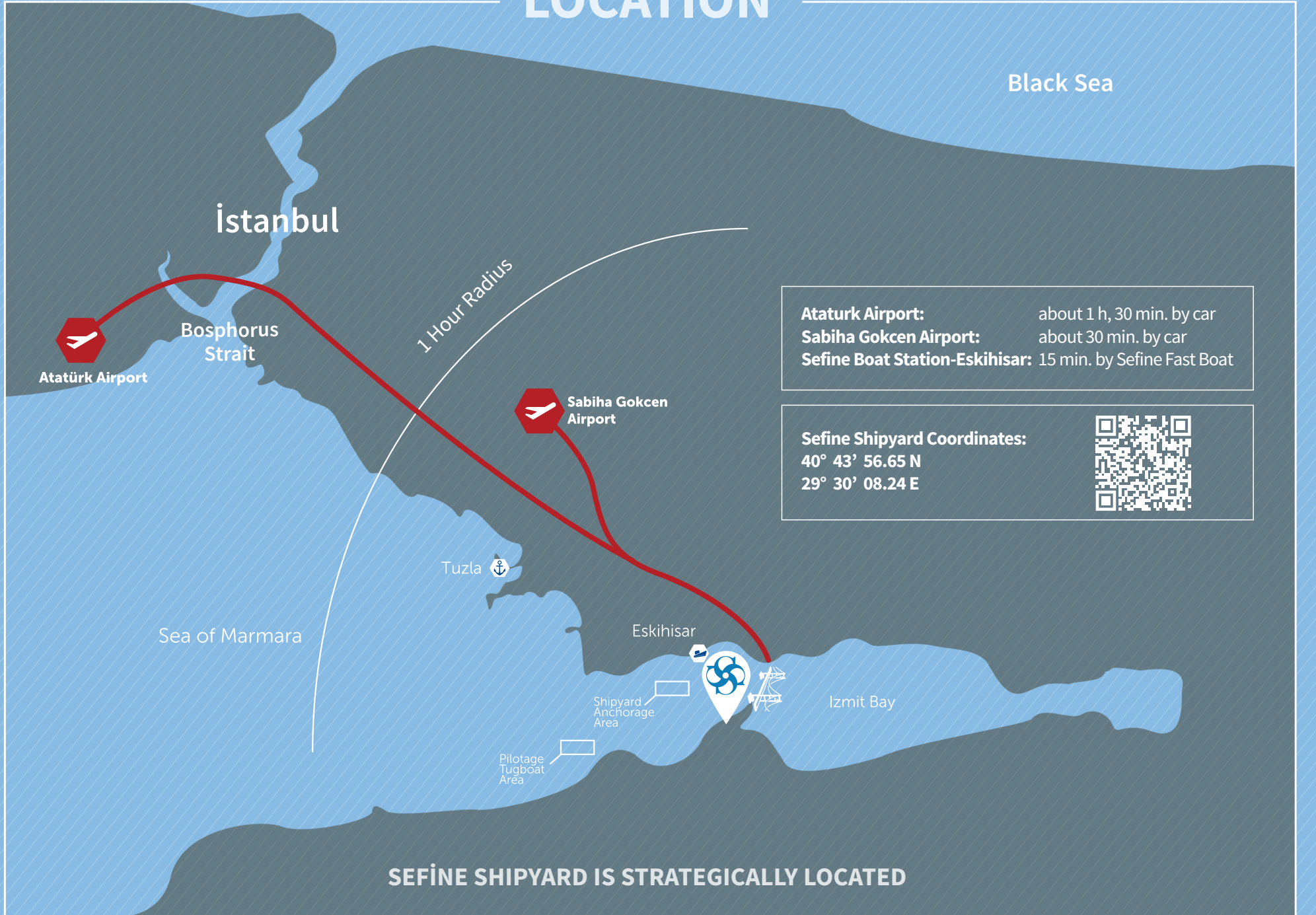


DEVIATION

Deviation List

	Distance (nm)	Journey Time
Gebze - TR	5 nm	30 min
Izmit - TR	13 nm	40 min
Istanbul - Strait of Bosphorus	39 nm	2 hours
Gemlik - TR	64 nm	4 hrs
Dardanelles - TR	160 nm	11 hrs
Izmir - TR	398 nm	1 day, 4 hrs
Iskenderun - TR	890 nm	2 days, 15 hrs
Piraeus - Athens - GR	398 nm	1 day, 4 hrs
Varna - BG	200 nm	14 hrs
Constanta - RO	255 nm	18 hrs
Odessa - UKR	387 nm	1 day, 3 hrs
Mariupol - UKR	589 nm	1 day, 18 hrs
Alexandria - EG	767 nm	2 days, 6 hrs
Beirut - LEB	884 nm	2 days, 15 hrs
Haifa - ISR	889 nm	2 days, 15 hrs
Suez Canal - EG	920 nm	2 days, 22 hrs
Valletta - MLT	866 nm	2 days, 13 hrs
Genova - IT	1320 nm	2 days, 17 hrs
Strait of Gibraltar	1832 nm	5 days, 10 hrs
Rotterdam - NL	3269 nm	9 days, 17 hrs
New York - USA	5053 nm	17 days, 13 hrs
Lagos - NGR	4958 nm	14 days, 18 hrs

LOCATION



Office Address

Hersek Mah. Ipekyolu Cad. No: 7
PO.Box 77700 Altinova - Yalova / Turkey

Office Phone

+90 226 815 36 36

Office Fax

+90 226 815 36 37

E-Mail

Contact E-mail for Ship Repair

shiprepair@sefine.com.tr

Contact E-mail for Ship Conversion

shipconversion@sefine.com.tr

Contact E-mail for New Building

newbuilding@sefine.com.tr

www.sefine.com.tr



/SefineShipyards



/sefineshipyards



/sefineofficial



/sefineshipyards



/SefineShipyards