

"LAY VESSEL 108"

PIPE-LAYING/OFFSHORE CONSTRUCTION VESSEL



PRINCIPAL PARTICULARS

Length overall	132.44 m
Length between p.p.	120.40 m
Breadth moulded	27.00 m
Depth main deck	9.70 m
Depth tween deck	6.20 m
Max. Draft	6.85 m
Gross tonnage	10830

CAPACITIES

Deck Area	1750 m ²
Fuel-Oil	1900 m ³
Fresh Water	860 m ³
Ballast Water	6200 m ³

CLASS

Det Norske Veritas +1A1, HELDK, DYNPOS-AUTR, DK(+), EO, CLEAN, COMF(V3), NAUT.OSV(A)

ACCOMMODATION

Total number of crew 129 persons

EQUIPMENT FOR CARGO

DECK CRANE (1)
 Make: NOV AHC OC4500BSCE
 Max. Lifting capacity 400t at 15 m

DECK CRANE (1)
 Make: NOV AHC Knuckle Boom
 Max. Lifting capacity 100t at 16 m

PROVISION CRANE (2)

Make: TTS - Type GP-80-2-12
 Max. Lifting capacity 2t at 12 m

DECK MACHINERY

ANCHOR MOORING WINCH (2) Electro-hydraulic
 Make: Ibercisa MAN-H/H/62/28 t

CAPSTAN (4) Electro-Hydraulic
 Make: Ibercisa CH/30/10-15/10 t

MANOEUVRING SYSTEM

AZIMUTH THRUSTER (2)
 Make: Rolls-Royce - Type AZP-120
 Power 3500 kW
 Motor Make Alconza
 Propeller Diam 3000 mm

TUNNEL THRUSTER (2)
 Make: Rolls-Royce - Type TT-2400
 Power 1500 kW
 Motor Make Alconza
 Propeller diam 2400 mm

SWING THRUSTER (1)
 Make: Rolls-Royce - Type TCNS-92/62
 Power 1500 kW
 Motor Make Alconza
 Propeller diam 2400 mm

DYNAMIC POSITIONING SYSTEM

Make: Kongsberg Simrad - Type DPC21

DIESEL ELECTRIC PROPULSION SYSTEMS

ENGINES (4+1)

Make: Wärtsilä - Type 7L32(4)
 Power 3360 kW at 720 rpm

GENERATOR (4)
 Make: Alconza - Type NIR 7185 A-10LW
 Power 3589 kVA 690V/60Hz

Make: Wärtsilä - Type 8L26 (1)
 Power 2600 kW at 900 rpm

GENERATOR (1)
 Make: Alconza - Type NIR 6388 A-BLW
 Power 2772 kVA 690V/60Hz

HARBOUR/EMERGENCY GENERATOR

ENGINE(1)

Make: Caterpillar - Type C-32
 Power 994kW at 1800 rpm

GENERATOR(1)

Make: Stamford - Type HCM 634K
 Power 1347 kVA 690V/60Hz

MACHINERY SYSTEMS

PUMPS

Make Azcue

BILGE WATER SEPARATOR

Make: Facel - Type CPS-10B-2.5

STARTING AIR COMPRESSOR (2)

Make: Sperre - Type HL2/160

SERVICE AIR COMPRESSOR (2)

Make: Tamrotor - Type TMC-65.9
 Capacity 8.27 m³

LUB-OIL SEPARATOR (2)

Make: Alfa Laval - Type PU-150

FUEL OIL SEPARATOR (2)

Make: Alfa Laval - Type PU-150

FRESH WATER GENERATORS (2)

Make: Aquamar - Type AQ-25/2
 Capacity 25 /day each

INCINERATOR (1)

Make: Detegasa - Type DELTA IRLA-65
 Capacity 650000 Kcal/h

ANTI-HELLING SYSTEM (1)

Make: Framo - Type RBP 300.3
 Flow 1000 m³/h

TANK SOUNDING SYSTEM

Make: Ariston-Norway

SHIP'S SYSTEM

Automation system Wärtsilä Automation

Electric installation company Isolux

Ventilation/Air conditioning system Novenco

Accommodation Regenasa



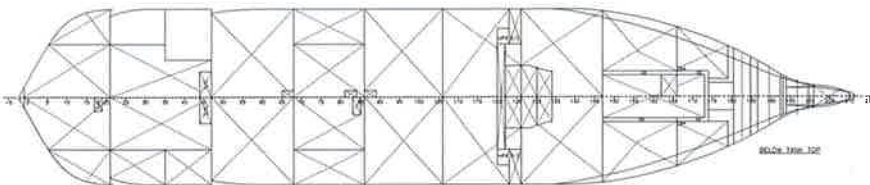
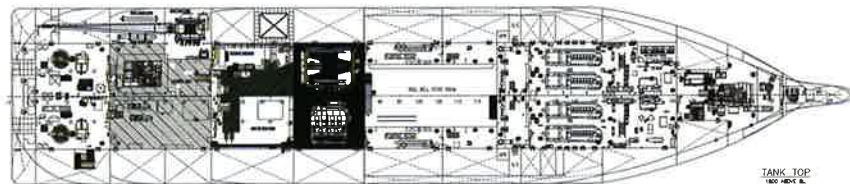
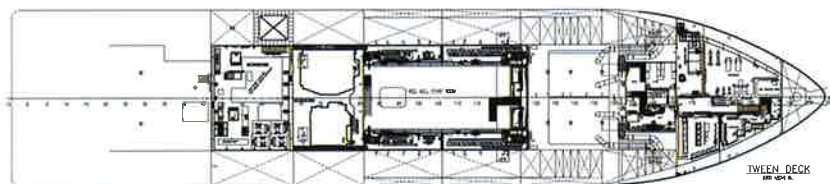
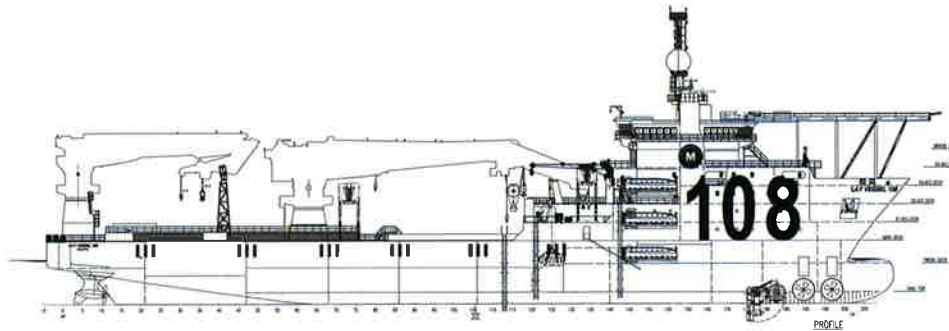
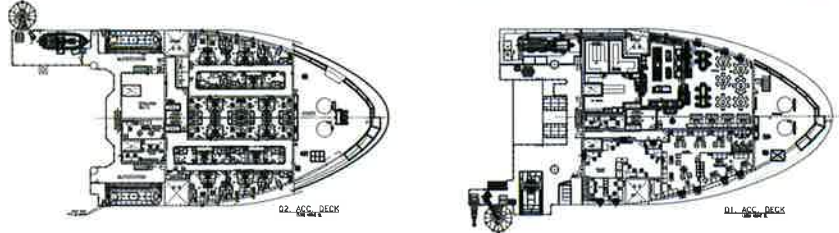
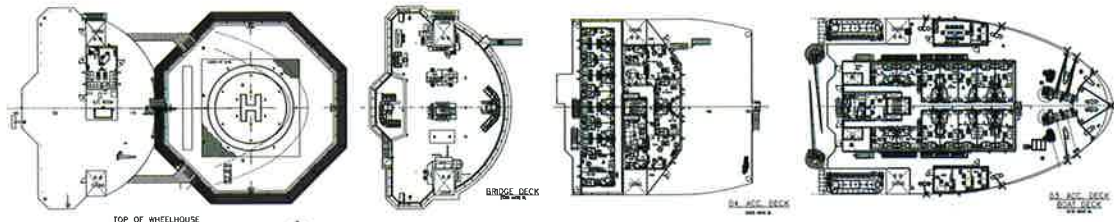
MetalSHIPS
 & DOCKS, S.A.U.

Ríos - Teis, s/n 36216 Vigo - España (Spain) - Telf./Phone: +34 986 811 800 / +34 986 811 827

Fax: +34 986 452 961 · E-mail: metalships@metalships.com · Web: www.metalships.com

"LAY VESSEL 108"

PIPE-LAYING/OFFSHORE CONSTRUCTION VESSEL



PRINCIPAL PARTICULARS

LENGTH OVER ALL:	132,44 M
L.O.A. WITH HELDECK:	135,65 M
LENGTH BETWEEN PERP.:	120,40 M
BREADTH MOULDED:	27,00 M
DEPTH MAIN DECK:	9,70 M
MAX. DRAFT:	6,85 M
FRAME SPACING:	0,60 M
ACCOMMODATION FOR 129 PERS:	
15 x 1 MAN CABINS	
57 x 2 MAN CABINS	

[IMO 9673600]



Item	Description	Quantity	Unit	Remarks
GENERAL ARRANGEMENT				
SAW 2022-II	PIPELAY VESSEL	1/250	A3	8.10.12
Project no. S520/12-082		Date: 02.10.12		
Revision: 01		Date: 02.10.12		
Drawing no. G547		Scale: A/AS9		
Sheet no. 1		Total sheets: 1		