

"NORTH OCEAN 103" ("APACHE II")

CONSTRUCTION UMBILICAL VESSEL



PRINCIPAL PARTICULARS

Length ovel all	133,60 m.
Length between p.p.	120,40 m.
Breadth moulded	27,00 m.
Depth main deck	9,70 m.
Depth tween deck	6,20 m.
Max. Draft	6,50 m.
Gross tonnage	7.000

CAPACITIES

Deck Area	2.000 m ²
Fuel-Oil	1.200 m ³
Fresh Water	1.000 m ³
Ballast Water	4.000 m ³

CLASS

Det Norske veritas+1A1, HELIDECK,DYNPOS-AUTR, DK, (+), EO, CLEAN, CONF(V3) NAUT-OSV

ACCOMMODATION

Total number of crew	120 persons
----------------------	-------------

EQUIPMENT FOR CARGO

Pipe Laying Equipment	
DECK CRANE (2)	
Make: TTS Type	GP-80-2-12
Max. Lifting capacity	12 T.
MOON POOL HATCH	
Designed by	TTS Ships Equipment
Size	7,20x7,20m.
With electro-hydraulic power pack	
Make	Neuwalme

DECK MACHINERY

Anchor Mooring Winch (2) Electro-hydraulic	
Make	Carral
Capstan (2) Electro-Hydraulic	
Make	Carral

MANOEUVRING SYSTEM

AZIMUTH THRUSTER (2)	
Make: Rolls-Royce-type	AZP-120
Power	3.500 Kw.
TUNNEL THRUSTER (2)	
Make: Rolls-Royce-Type	TT-2400
Power	1.500 Kw.
SWING-UP THRUSTER (1)	
Make: Rolls-Royce-Type	TCNS 92/62
Power	1.500 Kw.

DYNAMIC POSITIONING SYSTEM

Make: Kongsberg Simrad-type	DPC21
-----------------------------	-------

DIESEL ELECTRIC PROPULSION SYSTEMS

ENGINES (4)	
Make: Wartsila-Type	9R32
Power	3.300 Kw at 720 r.p.m.
GENERATOR (4)	
Make: Alconza-Type	NIR 7185A-10LW

HARBOUR/ EMERGENCY GENERATOR

ENGINE	
Make: Mitsubishi-type	S6R-MPTA
Power	800 Kva.
GENERATOR	
Make: Stanford_type	634C
Power	800 Kva.

MACHINERY SYSTEMS

PUMPS	
Make	Azcue
BILGE WATER SEPARATOR	
Make: Detegasa- type	Delta Ows-2
STARTING AIR COMPRESSOR (2)	
Make: Sperre-type	HL2/105
SERVICE AIR COMPRESSOR (1)	
Make: Tamrotor-type	EMH 35-8 EANA
Capacity	5,26 m ³
LUB-OIL SEPARATOR (2)	
Make: Alfa Laval-Type	MMPX 404 SGP-11
FUEL OIL SEPARATOR (2)	
Make: Alfa Laval-Type	MMPX 404 SGP-11
FRESH WATER GENERATORS (2)	
Make: Aquamar-Model: 25/2-Cap: 25T/day each	
INCINERATOR (1)	
Make: Detegasa-Type	DELTA IRL-50
Capacity	500.000 Kcal/h
ANTI-HELLING SYSTEM (1)	
Make: Framo-Type	RBP 300-Flow1.000 m ³ /h
TANK SOUNDING SYSTEM	
Make	Ariston-Norway

SHIP'S SYSTEM

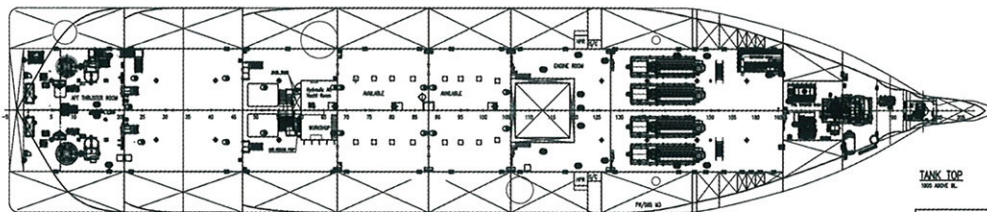
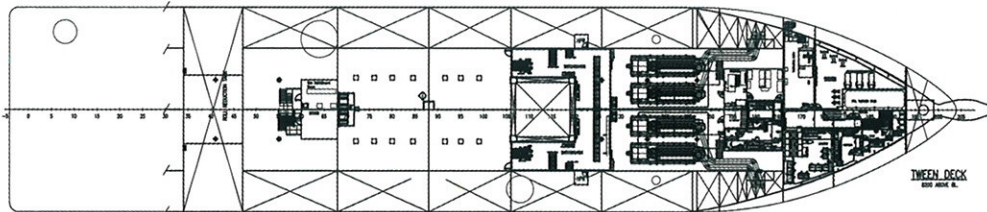
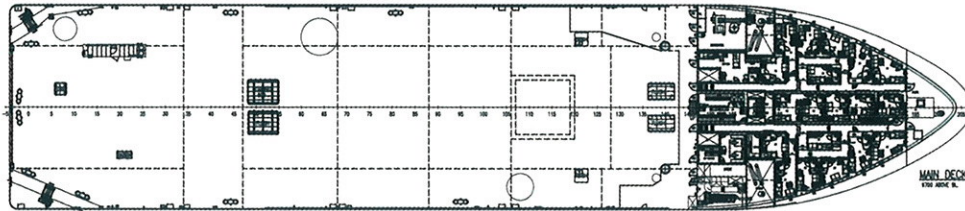
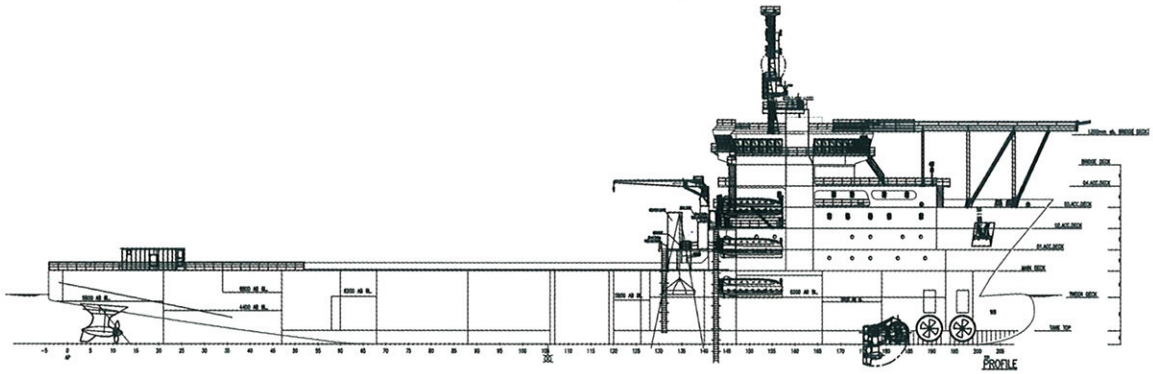
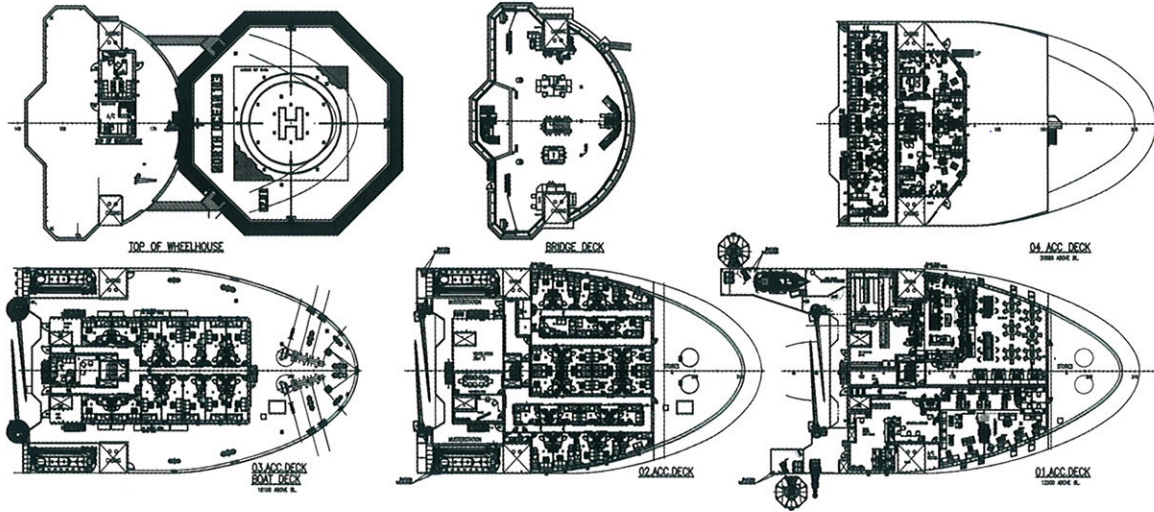
Automation System	Wartsila Automation
Electric installation company	Isolux
Ventilation/Air conditioning system	Novenco
Accomodation	Regenasa



MetalSHIPS
& DOCKS, S.A.U.

"NORTH OCEAN 103" ("APACHE II")

CONSTRUCTION UMBILICAL VESSEL



PRINCIPAL PARTICULARS

LENGTH OVER ALL:	133,60 M
L.O.A. WITH HELIDECK & STINGER	136,00 M
LENGTH BETWEEN PERP.:	120,40 M
BREADTH MOULDED:	27,00 M
DEPTH MAIN DECK:	9,70 M
MAX DRAFT:	6,85 M
FRAME SPACING:	0,60 M
ACCOMODATION FOR 120 PERS.	
24 x 1 MAN CABINS	
48 x 2 MAN CABINS	

IMO 9307951 287.101.001

NO.	DESCRIPTION	DATE	BY	CHECKED
1	GENERAL ARRANGEMENT	08.03.08		
2	SAW 2020			
3	UMBILICAL LAYING VESSEL			
Project no: S340/07-001		Drawing no: D879		
Scale: 1:200		Sheet: 1 of 1		
Author: AD		C/ASS		

