

# M/V "ARBOL GRANDE"

OFFSHORE SUPPORT VESSEL



## PRINCIPAL PARTICULARS

Length over all.....	94,28 m
Length between p.p.....	79,90 m
Breadth moulded.....	20,00 m
Depth main deck.....	9,50 m
Depth tween deck.....	6,50 m
Max. draft.....	7,00 m
Gross tonnage.....	5.530

## EQUIPMENT FOR CARGO

### MAIN CRANE

Make: TTS - Type..... GPCTO 2000 - 6041  
Max. lifting capacity: 60/25T at 14/25m and Aux. 15T. 26m

### SERVICE CRANE

Make: Hydralift Marine - Type..... KMCV 1301-2-16  
Max. lifting capacity..... SWL 2 T at 16 m

### MOON-POOL HATCH

Designed by..... TTS Ship's Equipment  
Size..... 7,20 x 7,20 m

With electro-hydraulic power pack Make..... Neuwalme

### PROVISION CRANE

Make: Hydralift Marine - Type..... MCV 886-2-8  
Max. lifting capacity..... SWL 2 T at 8 m

## CAPACITIES

Fuel-oil.....	1.379,59 m <sup>3</sup>
Fresh water.....	410,84 m <sup>3</sup>
Ballast water.....	2.472,28 m <sup>3</sup>

## SHIP'S SYSTEMS

Automation System..... AKER/Stadt Automation  
Electric installation company..... Isolux  
Ventilation/Air conditioning system..... Novenco  
Accommodation..... Maritime Montering/Regenasa

## CLASS

Det norkse Veritas + 1 A 1, SF, HELDK-SH, DYNPOS.  
AUTR, DK (+), E0

## ACCOMMODATION

Total number of crew..... 199 persons

## DECK MACHINERY

**ANCHOR/MOORING WINCH (2)** Electro-hydraulic

Make: Ship's Equipment - Type..... 50U3-80 KN

**CAPSTAN (2)** Electro-hydraulic

Make: Ship's Equipment - Type..... EHCV-50

Nominal force: 50 KN - Max. speed: 10m/min

## MANOEUVRING SYSTEMS

### AZIMUTH THRUSTER (2)

Make: Rolls-Royce - Type..... US 255-S600

Power..... 2400 Kw at 1200 r.p.m.

Gear reduction..... 5,286:1

Motor make..... Alconza

Propeller diam..... 2700 mm

### SWING-UP THRUSTER FWD (1)

Make: Rolls-Royce - Type..... TCNS 83/M-220

Power..... 1200 Kw at 1800 r.p.m.

Gear reduction..... 7,63:1

Motor make..... Alconza

Propeller diam. 2200 mm. - 4 blades - 236 r.p.m.

### TUNNEL THRUSTER (2)

Make: Rolls Royce - Type..... 250 TV-SS

Power..... 883 Kw at 1200 r.p.m.

Gear reduction..... 4,54:1

Propeller diam. 1960 mm. - 4 blades - 264 r.p.m.

## DYNAMIC POSITIONING SYSTEM

Make: Kongsberg Simrad - Type..... SPD21

## HARBOUR/EMERGENCY GENERATOR

### ENGINE

Make: Volvo Penta - Type..... TAMD165A

Power..... 428 Kw at 1800 r.p.m. with

### GENERATOR

Make: Stamford - Type..... HCM534C1

Power..... 440V/60Hz, 450 KVA 590, 5A, 1800 r.p.m.

## DIESEL ELECTRIC PROPULSION SYSTEMS

### ENGINES (2)

Make: Wärtsilä - Type..... 6L26A

Power..... 1860 Kw at 900 r.p.m. with

### GENERATOR (2)

Make: Alconza - Type..... NIR5680 A-8 LW

Power..... 2213 KVA at 900 r.p.m., 690V/60Hz, 1852 A

### ENGINES (2)

Make: Wärtsilä - Type..... 8L26A

Power..... 2480 Kw at 900 r.p.m. with

### GENERATOR (2)

Make: Alconza - Type..... NIR6378 A-8 LW

Power..... 2975 KVA at 900 r.p.m., 690V/60Hz, 2489 A

## MACHINERY SYSTEMS

### PUMPS

Make..... Azcue

### BILGE WATER SEPARATOR

Make: Detegasa - Type..... Delta Ows-2

### STARTING AIR COMPRESSOR (2)

Make: Sperre - Type..... HL2/105

Capacity..... 47 m<sup>3</sup>/h each

### SERVICE AIR COMPRESSOR (1)

Make: Tamrotor - Type..... EMH 35-8 EANA

Capacity..... 5,26 m<sup>3</sup>/min

### LUB-OIL SEPARATOR (2)

Make: Alfa Laval - Type..... MMPX 404 SGP-11

Capacity..... 2 m<sup>3</sup>/h each

### FUEL-OIL SEPARATOR (2)

Make: Alfa Laval - Type..... MMPX 404 SGP-11

Capacity..... 2 m<sup>3</sup>/h

### FRESH WATER GENERATORS (3)

Make: Aquamar - Model: 25/2 - Cap: 25 T/day each

### INCINERATOR (1)

Make: Detegasa - Type..... DELTA IRL-50

Capacity..... 500.000 Kcal/h

### ANTI-HEELING SYSTEM (1)

Make: Framo - Type: RBP 250-31 5010F - Flow: 600m<sup>3</sup>/h

### TANK SOUNDING SYSTEM

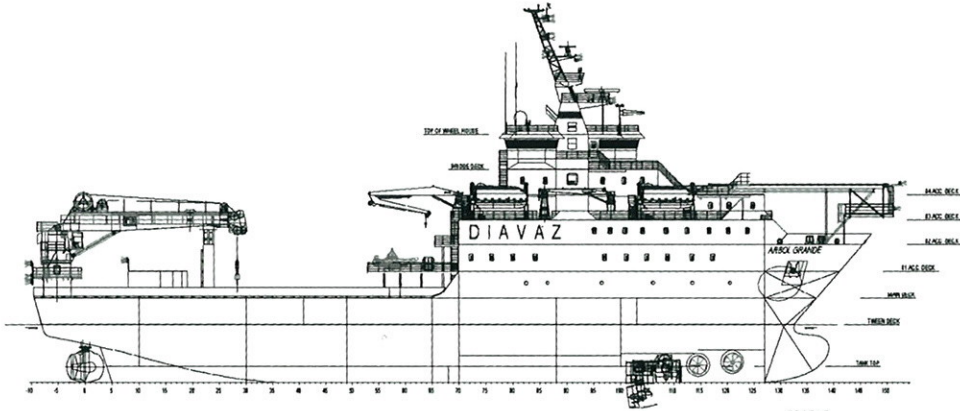
Make: Rolls-Royce - Type UMAS V - Electropneumatic



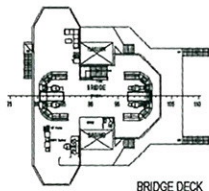
**MetalSHIPS**  
& DOCKS, S.A.U.

# M/V "ARBOL GRANDE"

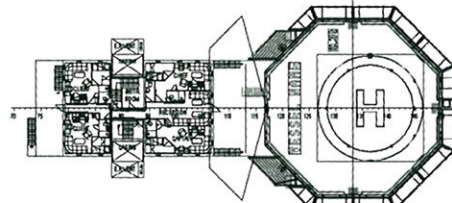
OFFSHORE SUPPORT VESSEL



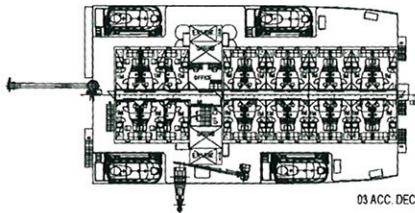
PROFILE



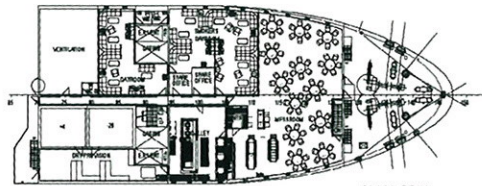
BRIDGE DECK



04 ACC. DECK



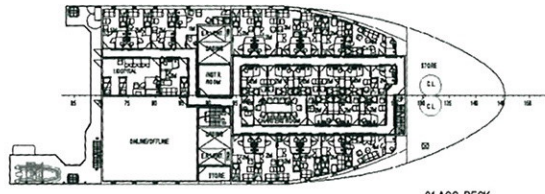
03 ACC. DECK



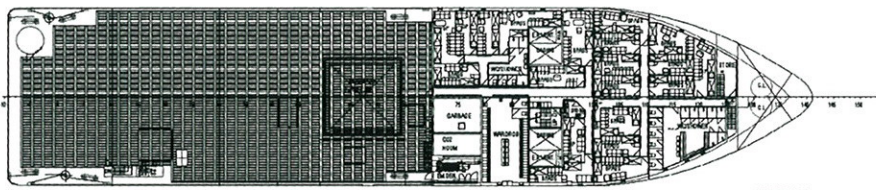
02 ACC. DECK



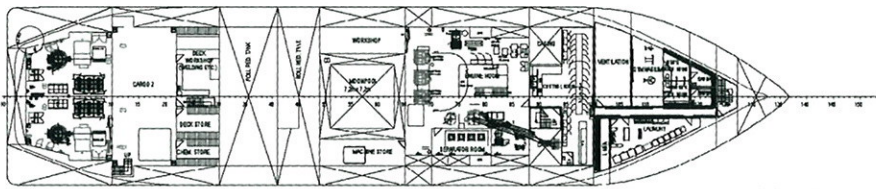
01 ACC. DECK



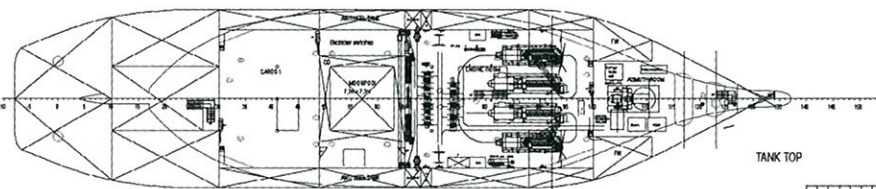
01 ACC. DECK



MAIN DECK



TWEEN DECK



TANK TOP


**PRINCIPAL PARTICULARS**

LENGTH OVER ALL:	94,28 M
LENGTH BETWEEN PERP.:	79,50 M
BREADTH MOULDED:	20,00 M
DEPTH MAIN DECK:	9,50 M
DEPTH TWEEN DECK:	6,50 M
MAX DRAFT:	7,00 M
FRAME SPACING:	0,60 M
ACCOMMODATION FOR 199 PERS.	
29 x 1 MAN CABINS	
25 x 2 MAN CABINS	
20 x 6 MAN CABINS	

**CLASS**

+1A1, SF, HELICO-SH, DYNPOS-AUTR, DK(+), E0



NO. 1	GENERAL ARRANGEMENT	Scale	1:200	Sheet	011	26.02.01
NO. 2		Frame	AC	Sheet	012	26.04.01
Offshore Support Vessel		Project no.	S 133.00.148			
S/M/V 2003		W.P. no.	101			
		Design no.	A818			
		Page	1			
		Sheet	1 x 1			