

# DORMAC

MARINE & ENGINEERING



# WELCOME



A division of

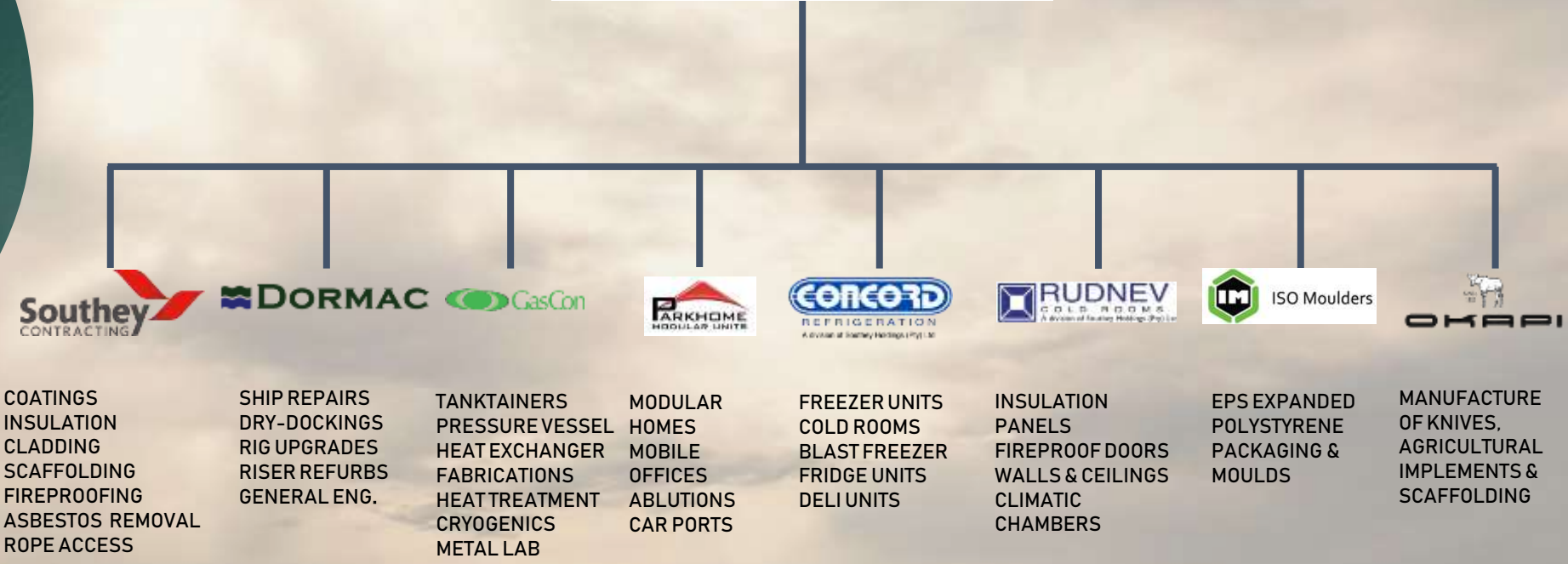


**SOUTHEY HOLDINGS**  
INVESTORS IN EXCELLENCE

Your 24/7 One Stop Ship Repair Partner in Southern Africa



# ORGANISATION STRUCTURE



# SOUTH AFRICAN PORT INFRASTRUCTURE



## Saldanha Bay

- 120km North West of Cape Town
- Depth upto 21.5m
- Existing O&G fabrication yard
- Suitable for Jack up repairs

- Sturrock Dock 360m x 42m x 13.7m
- Quay 502, dedicated O&G ( A ) berth & repair quay & dedicated Fabrication yards
- Robinson, Simon's Town Docks



## Cape Town



Saldanha Bay  
Cape Town

Richard's Bay  
Durban



- Deepwater Port – 18m

## Coega



## Richard's Bay

- Planned Deepwater repair Port – 200km from Durban
- 19m draft

- Well established Ship Repair and Ship Building infrastructure
- Prince Edward Dock – 352m x 34m x 12m
- Dormac Dock 1 – 155m x 24m x 6m
- Private repair quay x 2 and large lay down and fabrication area.



## Durban



# DORMAC GROUP OVERVIEW



A division of



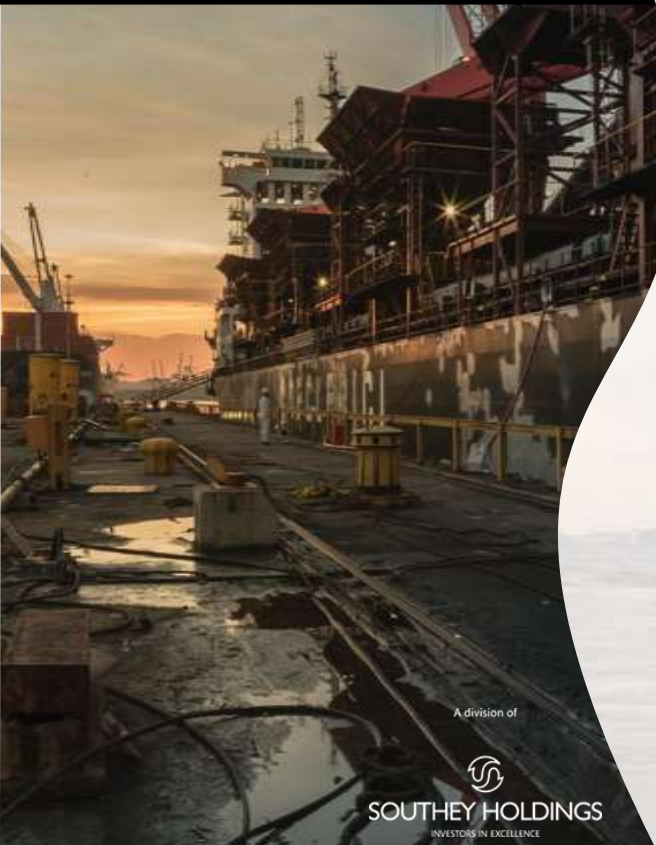
**SOUTHEY HOLDINGS**  
INVESTORS IN EXCELLENCE

 **DORMAC**  
MARINE & ENGINEERING



- **Founded in 1903 in Durban, followed by new businesses formed:**
  - ◇ Durban
  - ◇ Richards Bay            1998
  - ◇ Cape Town                2005
  - ◇ Saldanha Bay            2007
  - ◇ Walvis Bay                2009
  - ◇ Dormac Dock 1 arrival July 2016
- **Accredited DNV - ISO 9001 - 14001 - 18001.**
- **SA's Engineering and Metal Industry's Award winning Leading Skills Development Company,**
- **Cape Chamber Commerce exporter of year 2014.**
- **Formal Accredited (Master Service Agreements) by: Ensco, Transocean, Pacific, Diamond, Dolphin, Maersk, KCA, Technip, Solstad, SBM, Western Geco, Subsea 7, Chevron, BP , & others.**
- **Accredited Technical Partners to :**
  - **SKF, Simplex Seals, Alfa Laval, Lagersmit Seal Systems, HiMSen, HHI Guarantee Yard, SMS.**

# DURBAN SHIPYARD



A division of

  
**SOUTHEY HOLDINGS**  
INVESTORS IN EXCELLENCE

- Dormac Yard is 47,216 m<sup>2</sup>
- Owned 155m 8500t private floating dock

## Steel fabrication

- Large building areas with slipway
- 50 ton overhead crane

## Machine shop

- Largest & best equipped machine shop on coast
- 3 lathes in excess of 14 meter length
- Latest CNC lathes & milling machines
- Very large capacity vertical & horizontal borers
- Heat treatment oven
- 50 Ton crane capacity

## Pipe Shop

- Equipped with pipe jiggling & bending equipment
- Workshop complete with gantry cranes
- CuNiFe, Yorcalbro, Stainless, Mild, Galvanised and HP Piping.



## Yard Repair Quay

- Length of Main Quay 195m x 8m draft. Vessels upto 260m can be accommodated.
- Liebherr quayside crane 50 ton lifting capacity at 30m and 15 ton at 50m
- Hatch cover repair area can accommodate 37x30ton hatch covers



# DORMAC DOCK 1



“Dormac Dock 1” is the first brand new composite 8500 ton floating dock to enter service in Southern Africa, and the single largest investment by the Southey Holdings Group into the Ship Repair industry in the region. The arrival of Dock 1 allows Dormac not only to accommodate a greater volume of clients’ vessels, but also to better utilise the existing panamax docking facilities in Durban and Cape Town.

The dock is equipped with the latest energy-efficient technology and a computerised levelling system, as well as two brand new 16m 7.5-tonne cranes (instead of the typical 5-tonne cranes).

Based on client demands, the new quay has also been designed with back-of-quay support to accommodate offshore supply base activities and services.



# DORMAC DOCK 1



MV SOLUTION



MV MCP GRAZ



MT AZERIGAS

A division of  
  
**SOUTHEY HOLDINGS**  
INVESTORS IN EXCELLENCE

 **DORMAC**  
MARINE & ENGINEERING

  
MANAGEMENT SYSTEM CERTIFICATION  
ISO 9001 - ISO 14001  
OHSAS 18001

PRIVATE FLOATING DOCK



# DURBAN GRAVING DOCK

## Prince Edward Dock

- Overall docking length 352.04m and 33.5 m beam
- 2 divisions 206.9m & 138.68m
- 5 cranes ranging from 10 to 50 tons
- 12.5m depth



A division of



**SOUTHEY HOLDINGS**  
INVESTORS IN EXCELLENCE

**DORMAC**  
MARINE & ENGINEERING





**NEW BUILDS**  
**109 SHIPS BUILT TO DATE**



A division of  
  
**SOUTHEY HOLDINGS**  
INVESTORS IN EXCELLENCE

 **DORMAC**  
MARINE & ENGINEERING

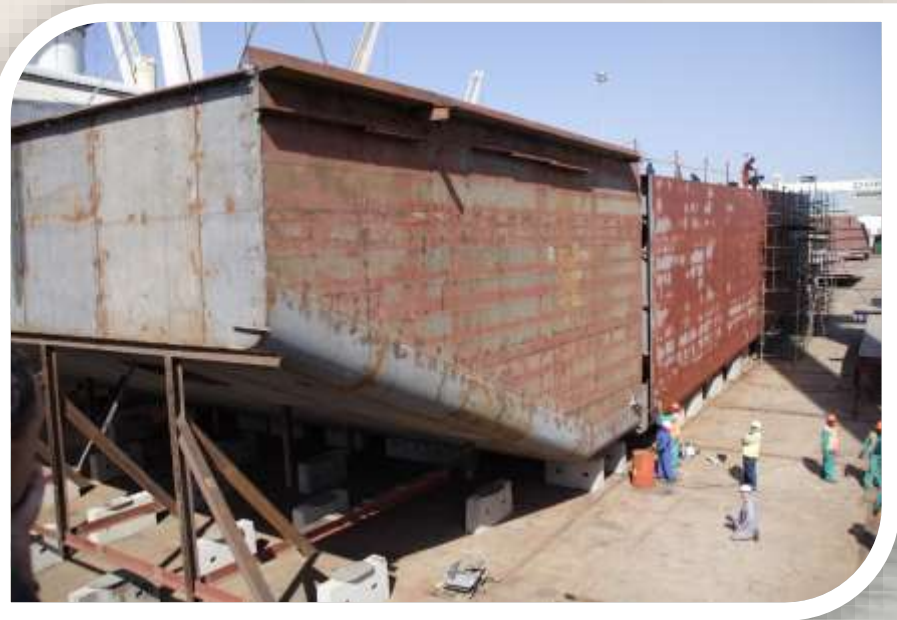
 **DNV-GL**  
MANAGEMENT SYSTEM CERTIFIED  
ISO 9001 - ISO 14001  
OHSAS 18001



**Ship Building Slipway**



**35m x 148m Slipway**



**Bunker Barge**







# DURBAN MACHINE SHOP



A division of  
**SOUTHEY HOLDINGS**  
INVESTORS IN EXCELLENCE



**DORMAC**  
MARINE & ENGINEERING



HEADING HERE | YOUR TEXT HERE



# CAPE TOWN FACILITIES



**MARINE DRIVE WORKSHOP**

- 4 Workshop totalling 2050m<sup>2</sup>
- Yard stowage area 500m<sup>2</sup>
- 2 x 25 ton Overhead Cranes

**SHOP 24**

- Workshop 86m x 25m = 2150m<sup>2</sup>
- Blast & Paint Shed = 780m<sup>2</sup>
- 1 x 25ton & 1 x 10ton Overhead Cranes
- Secure Yard = 6280m<sup>2</sup>

**PRIVATE QUAY 502**

- Length = 366m
- Draft = 10m
- Quayside area = 10,000m<sup>2</sup>

**CLIENT PROJECT OFFICE**

- Office area = 400m<sup>2</sup>
- Boardroom facilities
- Reception
- Washrooms
- Kitchen
- Internet

A division of





# CLIENTS PROJECT OFFICES CAPE TOWN



A division of  
  
**SOUTHEY HOLDINGS**  
INVESTORS IN EXCELLENCE



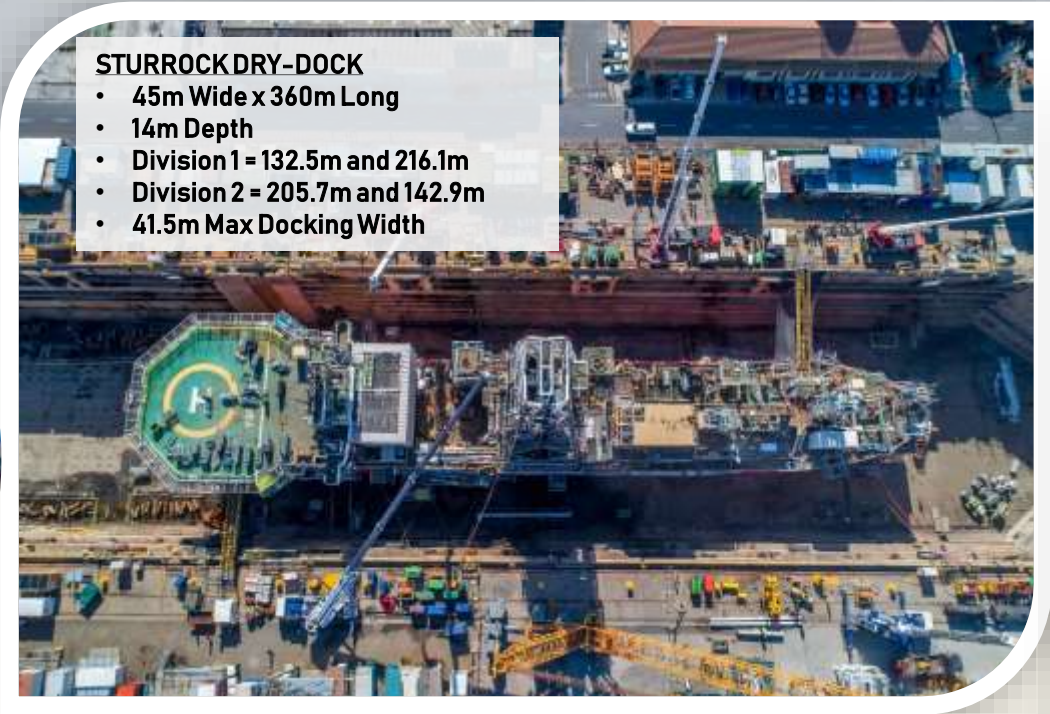


# CAPE TOWN



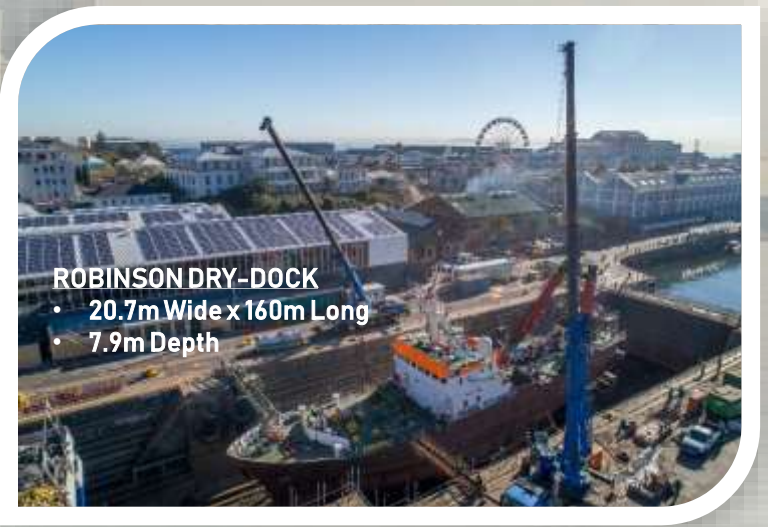
A Division of  
**SOUTHEY HOLDINGS**  
INVESTORS IN EXCELLENCE

**DORMAC**  
MARINE & ENGINEERING



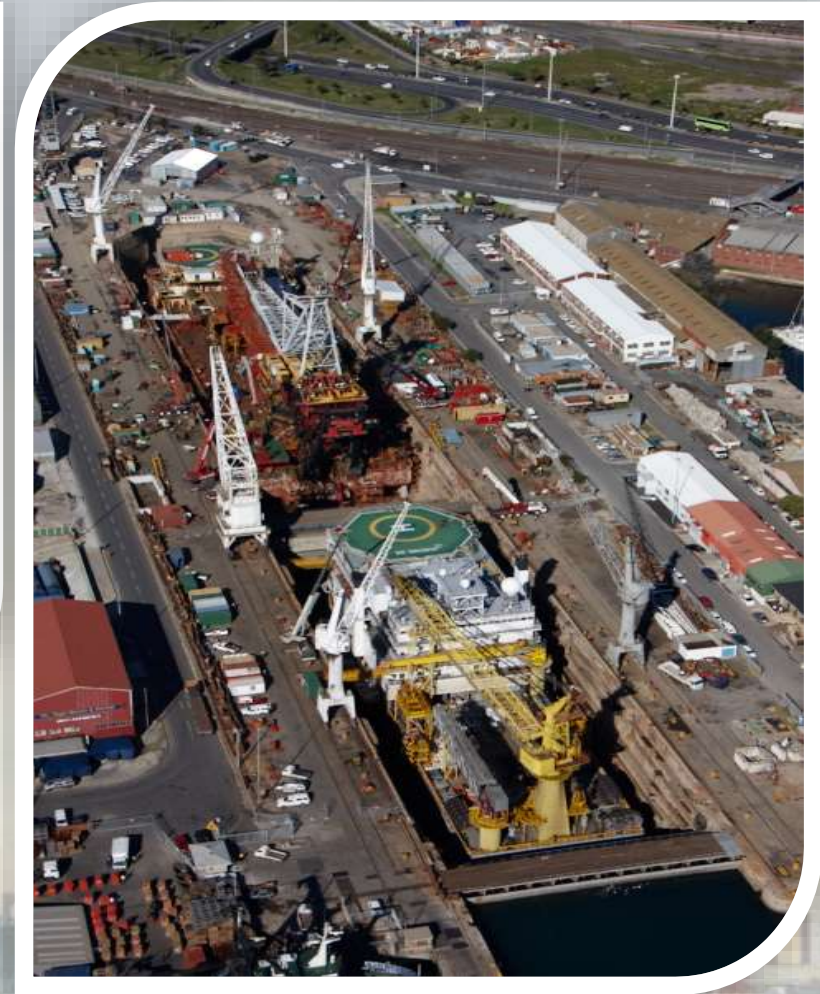
**STURROCK DRY-DOCK**

- 45m Wide x 360m Long
- 14m Depth
- Division 1 = 132.5m and 216.1m
- Division 2 = 205.7m and 142.9m
- 41.5m Max Docking Width



**ROBINSON DRY-DOCK**

- 20.7m Wide x 160m Long
- 7.9m Depth

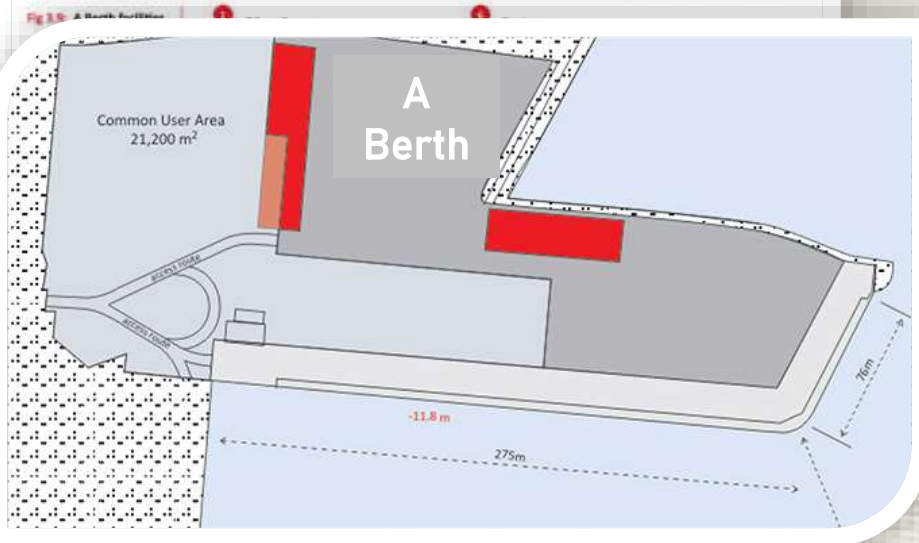




# CAPE TOWN



Admission of  
**SOUTHEY HOLDINGS**  
INVESTORS IN EXCELLENCE



**QUAY 501&502**



# SEVEN POLARIS PROJECT WORK SCOPE SUMMARY

6,000 m PIPE WORK  
210 TON STEELWORK  
12,000m<sup>2</sup> BLAST & PAINT  
95 MOTOR O/H (1,400KW)



INSTALLATION OF 120 TON WINCH INC.  
RENEWAL OF WOODEN FENDERS &  
EXHAUSTS

A division of



**SOUTHEY HOLDINGS**  
INVESTORS IN EXCELLENCE

**DORMAC**  
MARINE & ENGINEERING





# SALDANHA BAY



- Quayside 15m draft.
- Up to 1000 ton mobile crane.
- Quayside loading of 20 tons/m<sup>2</sup>.
- Favourable weather conditions.
- 50,000 m<sup>2</sup> of quayside and laydown area.
- 120 km from Cape Town (80 minute drive).
- 128 km from Cape Town International airport.
- Town accommodation capacity for over 2,000 people.





# SALDANHA BAY



- QUAY 204 – 250m LONG X 15m DRAFT
- SHELTERED BAY FOR HEAVY LIFT VESSELS
- QUAYSIDE LOADING = 15 TONS/M<sup>2</sup>





# SALDANHA BAY



**DORMAC**  
MARINE & ENGINEERING

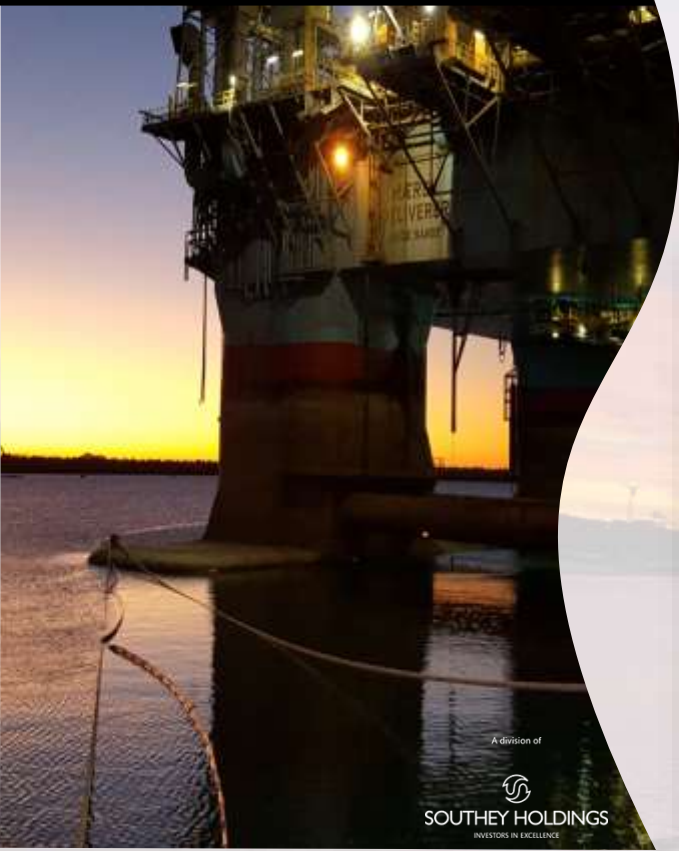


JACK-UP RIG UPGRADES IN SALDANHA BAY



# PORT OF NQUERA COEGA

18m draft quay 265m  
length  
SA's newest port.



A division of  
  
SOUTHEY HOLDINGS  
INVESTORS IN EXCELLENCE

 **DORMAC**  
MARINE & ENGINEERING

  
MANAGEMENT SYSTEM CERTIFICATION  
DNV-GL  
ISO 9001 - ISO 14001  
OHSAS 18001



# PORT OF NQUERA COEGA

## Typical Quayside Site Establishment



Fender barges for Semi-Subs



A division of  
  
**SOUTHEY HOLDINGS**  
INVESTORS IN EXCELLENCE

 **DORMAC**  
MARINE & ENGINEERING

  
MANAGEMENT SYSTEM CERTIFICATION  
DNV-GL  
ISO 9001 - ISO 14001  
OHSAS 18001

**NEW GENERATION SEMI-SUBS IN COEGA**



# PORT OF NQUERA COEGA



A division of



**SOUTHEY HOLDINGS**  
INVESTORS IN EXCELLENCE



**New Generation DRILLSHIPS in COEGA**



# PORT OF NQUERA COEGA



A division of



## Bolette Dolphin:

- BOP change out.
- 600 Ton Mobile Crane





# DORMAC GROUP

- Steelwork
- HP & LP Pipe work
- Mechanical works
- Machining
- Electrical
- Blasting & coating
- Diving services
- New Building & Fabrications
- Dry Docking
- Shopfitting



A division of



**SOUTHEY HOLDINGS**  
INVESTORS IN EXCELLENCE

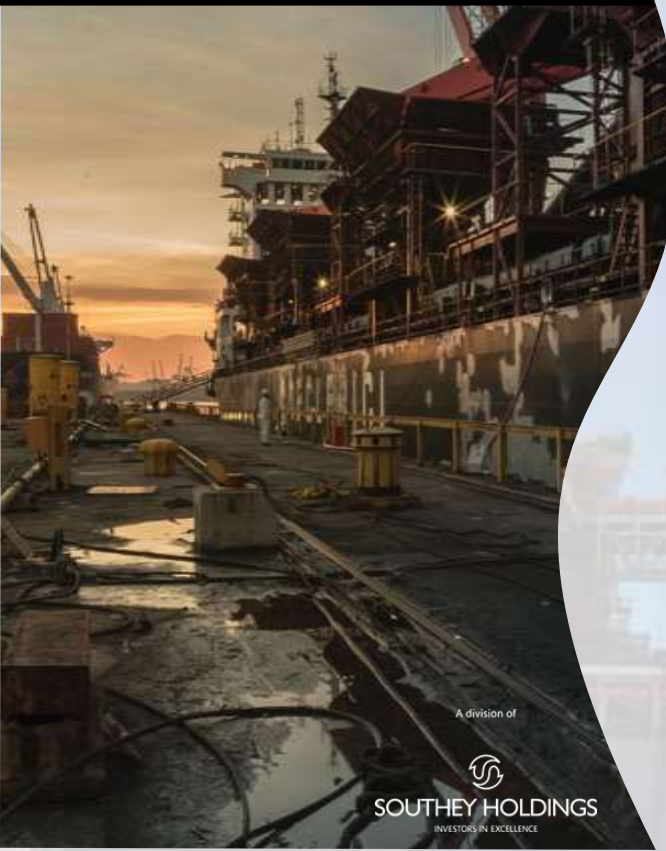
**DORMAC**  
MARINE & ENGINEERING



**IN-HOUSE CORE SERVICES**



# THRUSTERS OVERHAULS



A division of



**SOUTHEY HOLDINGS**  
INVESTORS IN EXCELLENCE

**DORMAC**  
MARINE & ENGINEERING



## COMPLETE THRUSTER OVERHAUL

40 TON  UNITS



SEVEN POLARIS



# MECHANICAL REPAIRS



A division of  
**SOUTHEY HOLDINGS**  
INVESTORS IN EXCELLENCE



**DORMAC**  
MARINE & ENGINEERING



# THRUSTER MACHINING REPAIRS



# ENGINE REPAIRS



A division of



MAN-B&W 6S60MC



CHEVRON FSO

Complete Blasting to SA 2.5 and 5 Coat  
Paint System – 18,000 m<sup>2</sup> (12 days)

Installation &  
Hook-up of a  
180 Ton Power  
Plant Module



A division of



**SOUTHEY HOLDINGS**  
INVESTORS IN EXCELLENCE

**DORMAC**  
MARINE & ENGINEERING

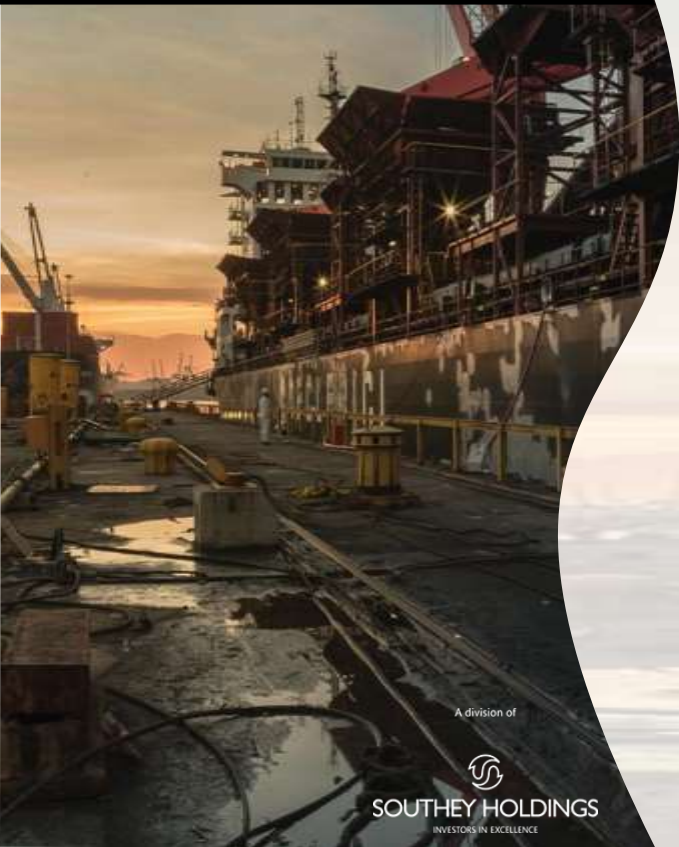


ISO 9001 - ISO 14001  
OHSAS 18001

FSO – ESCRAVOS



# UNDERWATER SERVICES



A division of

  
**SOUTHEY HOLDINGS**  
INVESTORS IN EXCELLENCE

 **DORMAC**  
MARINE & ENGINEERING



## Diving Services

- Maintenance & salvage
- Hull cleaning & propeller polish
- Class Approved UWILD Surveys
- Underwater welding repairs

## Cofferdam Technology

- Purpose designed
- 100% success record
- Classification approved

## Types of Cofferdams

- Spade / Skeg Type
- Hull Type
- Stern Tube Type
- Bow Thrusters
- Flexi dam (mobile)

## Class Approved

- RINA
- DNV/GL
- BV
- LR
- ABS
- Class NK



**DIVING & UNDER WATER SOLUTIONS**

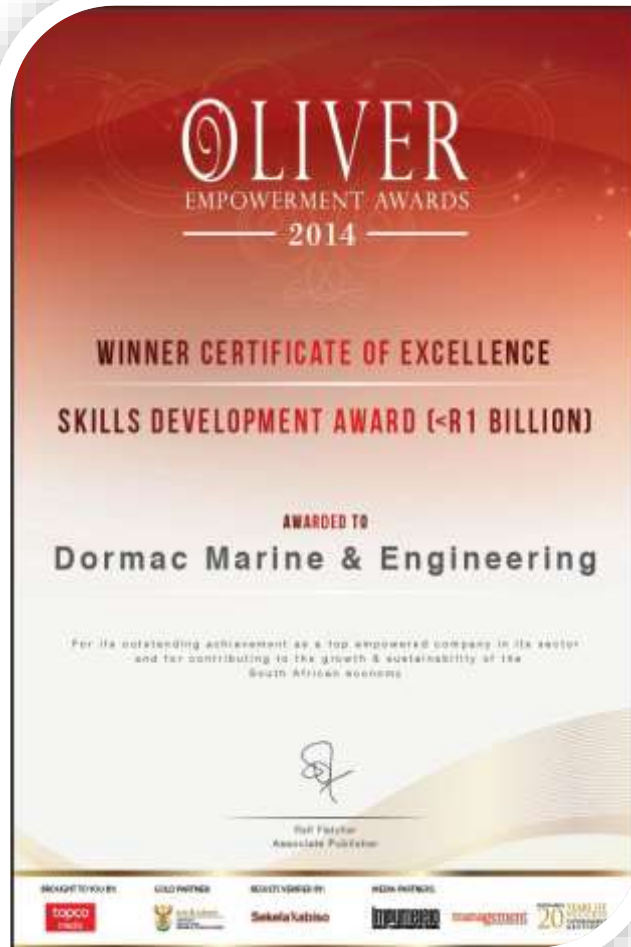


DORMAC

OUR FUTURE..



A division of



Full Apprenticeship Programme

Artisan Training Recognition

Accelerated Artisan Training Programme

Management Dev. Programme

TRAINING = 15% OF EMPLOYMENT COST

700 ARTISANS TRAINED TO DATE



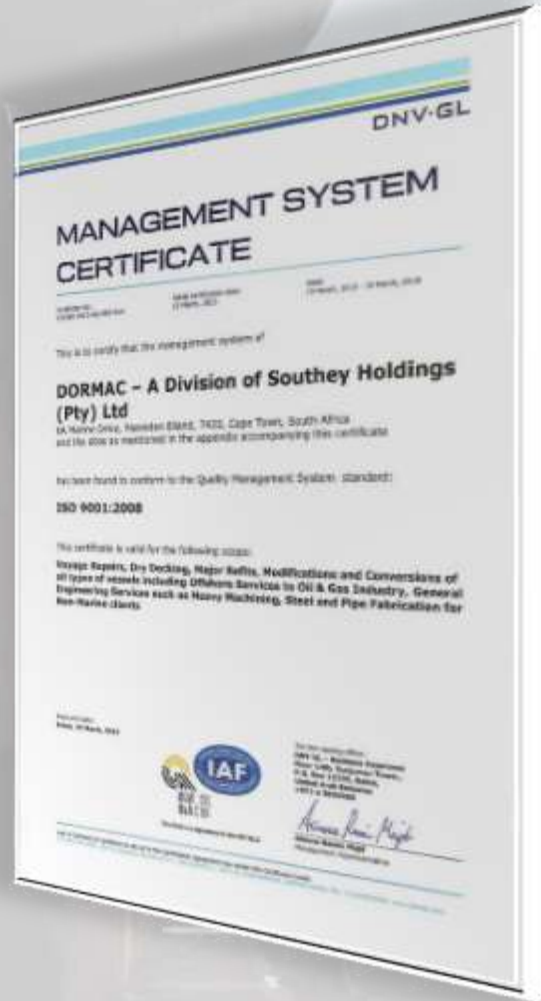
TRAINING ACHIEVEMENTS



# SHEQ CERTIFICATION



A division of





 **DORMAC**  
MARINE & ENGINEERING



THANK YOU



A division of



**SOUTHEY HOLDINGS**

INVESTORS IN EXCELLENCE

**DORMAC**