

San Diego – PE & Management Support

- Steady Marine's background & achievements
- Services provided
- Our strengths
- Organizational structure of Steady Marine and how this could contribute to MSC's workload.
- MSC boarding procedures & vendor onboarding process
- Q&A's



Steady Marine's Background & Achievements

- Founded in 2022 in San Diego.
- Bid for 38 projects
- Won 12 projects out of 38
- Completed 3 successful dry-docking projects: Curtiss, Keystone State, Cape Washington
- 3 ongoing projects
 - NB Power Nuclear Cooling Pump Manufacturing QC Supervision, Flowserve – LA
 - Cape Wrath, bringing laid up ship back to class
 - MV Petrel, dry docking at Tampa Ship, EXWC project

Services Provided

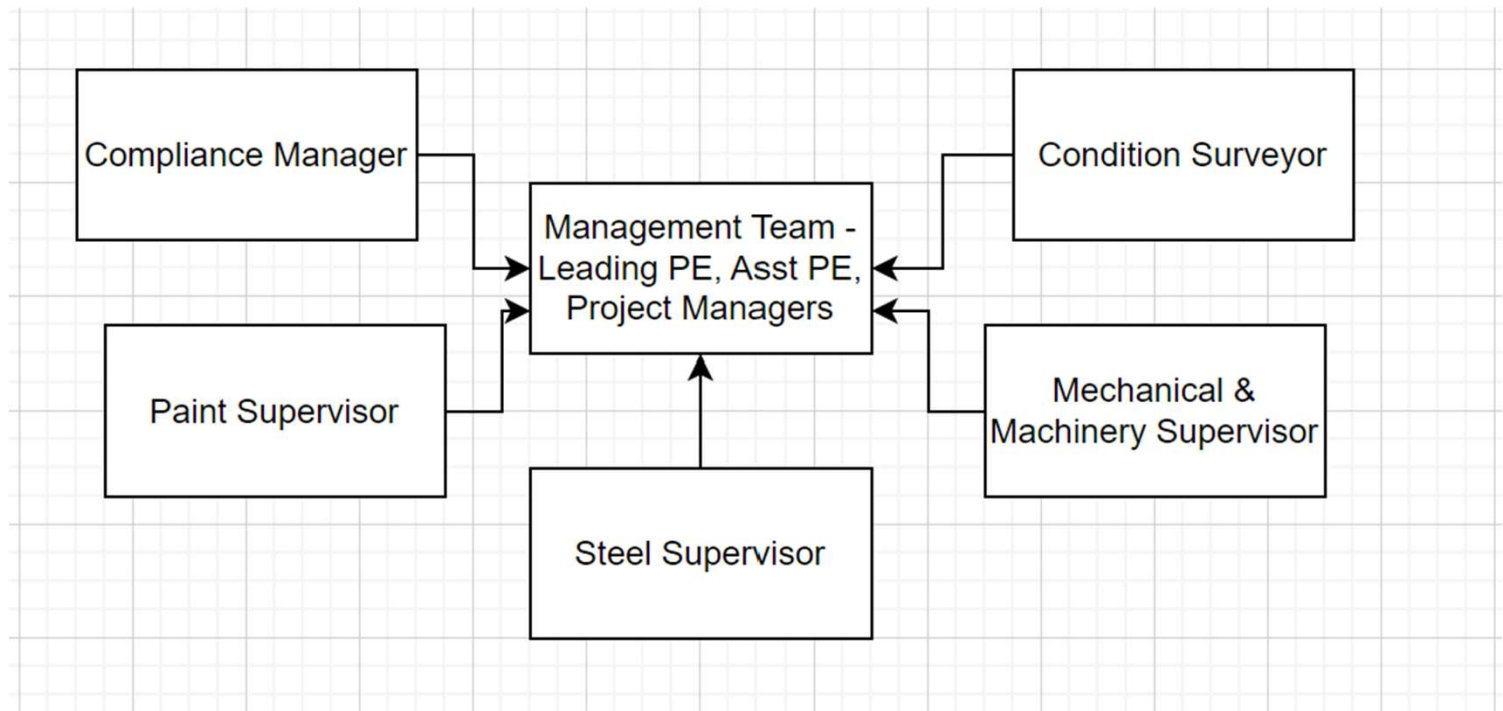
- Dry dock planning & management
- DD Spec Prep and Review
- Shipyard supervision
- Naval architecture support
- Condition surveys
- QC Inspections
- Material supply



Our Strengths

- Working in San Diego Area more than a decade
- As a result, good knowledge on service & material providers in the area
- Working together as a team for several years
- Sailed with government ships & crew
- Managed government ships & crew as PE
- Handled big scopes with smaller-size budgets

Organizational Structure



MSC Boarding Process & Requirements

- Insurance requirements
- Vendor onboarding process & person in charge for application



San Diego – PE & Management Support



Questions & Answers

