

DORMAC

MARINE & ENGINEERING



WELCOME

A division of



SOUTHEY HOLDINGS
INVESTORS IN EXCELLENCE

YOUR 24/7 ONE STOP SHIP REPAIR PARTNER IN SOUTHERN AFRICA

DURBAN SHIPYARD



- Dormac Yard is 47,216 m²
- Owned 155m 8500t private floating dock

Steel fabrication

- Large building areas with slipway
- 50 ton overhead crane

Machine shop

- 3 lathes in excess of 14 meter length
- Latest CNC lathes & milling machines
- Heat treatment oven
- 50 Ton crane capacity
- Very large capacity vertical & horizontal borers
- Largest best equipped machine shop on coast

Pipe Shop

- Equipped with pipe jiggling & bending equipment
- Workshop complete with gantry cranes
- Carbon, CuNiFe, Yorcalbro, Stainless, Galvanised
- LP and HP systems



Yard Repair Quay

- Length of Main Quay 195m x 8m draft. Vessels up to 260m can be accommodated.
- Liebherr quayside crane 50 ton lifting capacity at 30m and 15 ton at 50m
- Hatch cover repair area can accommodate 37x30ton hatch covers

PRIVATE QUAY



DEEP CONSTRUCTOR



MSC MARTINA



195m x 8m DRAFT with 50 TON CRANE and 50m reach

SLIPWAY



140m long, 35m wide construction slipway for the dry-docking of smaller craft is available. The slipway is serviced by both 120 ton and 25 ton Goliath cranes.



DORMAC
MARINE & ENGINEERING



SHIP BUILDING AND DRY-DOCKING SLIPWAY

NEW BUILDS
109 SHIPS BUILT TO DATE



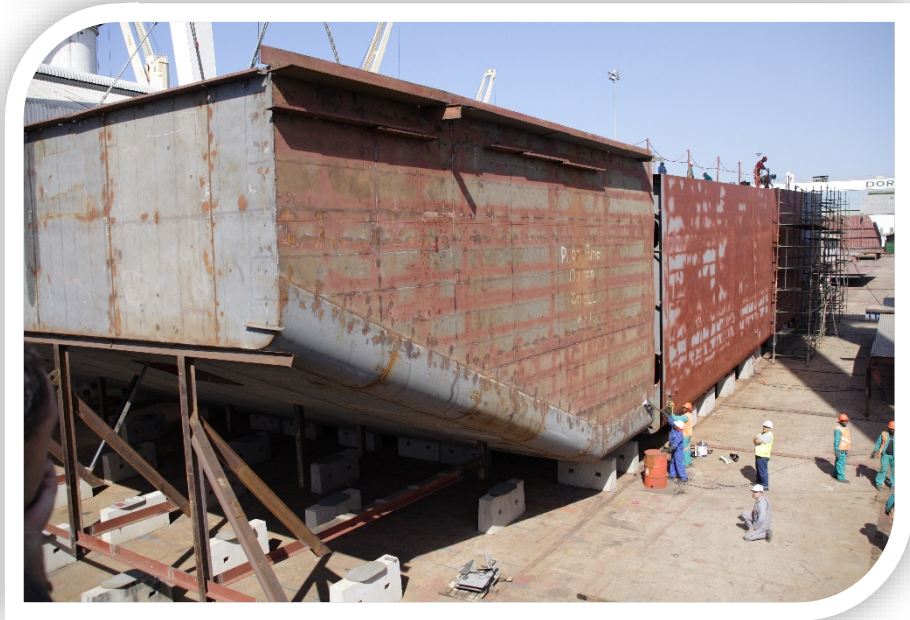
A division of
SOUTHEY HOLDINGS
INVESTORS IN EXCELLENCE



Ship Building Slipway



35m x 148m Slipway



Bunker Barge

MT FUMANA & SMIT LIPUMA

DURBAN GRAVING DOCK

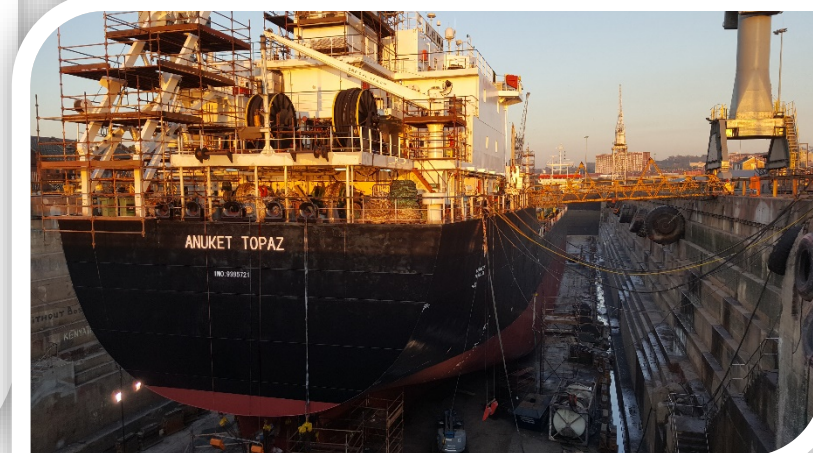
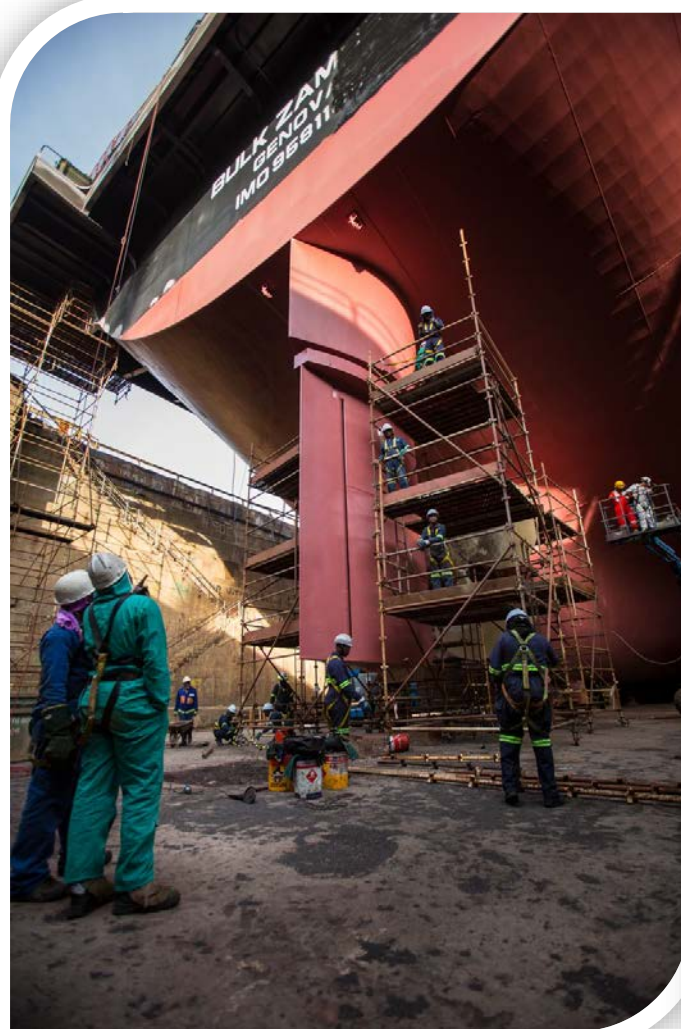


A division of


SOUTHEY HOLDINGS
INVESTORS IN EXCELLENCE

Prince Edward Dock

- Overall docking length 352.04m and 33.5 m beam
- 2 divisions 206.9m & 138.68m
- 5 cranes ranging from 10 to 50 tons
- 12.5m depth



 **DORMAC**
MARINE & ENGINEERING



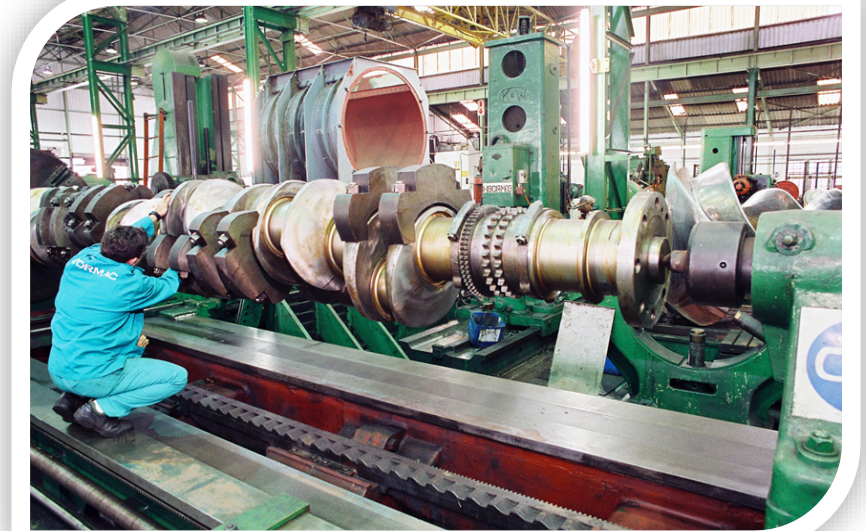
DURBAN MACHINE SHOP



A division of

SOUTHEY HOLDINGS
INVESTORS IN EXCELLENCE

 **DORMAC**
MARINE & ENGINEERING



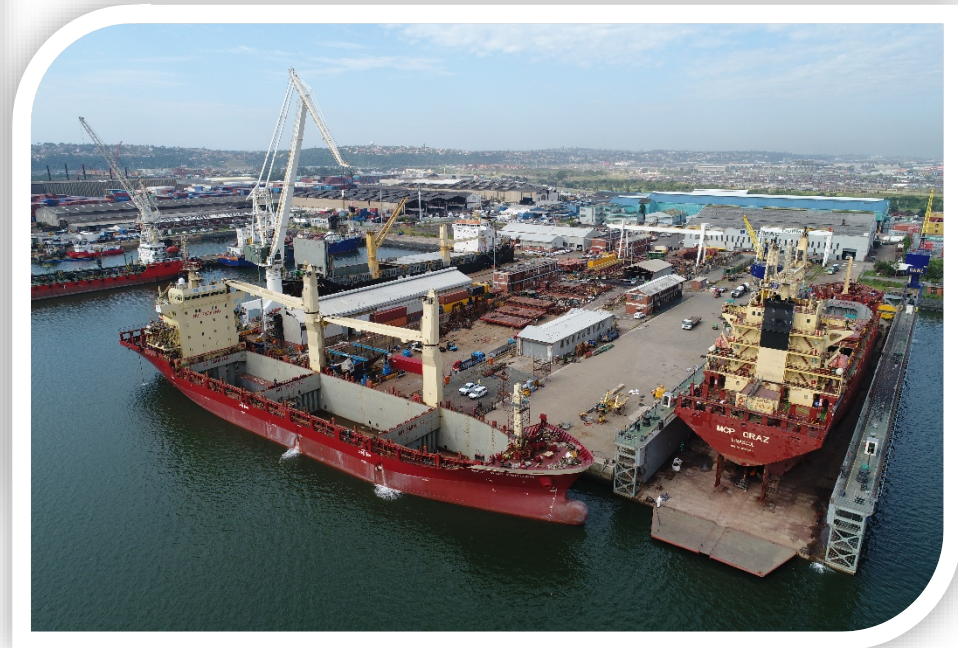
MACHINE SHOP AND CNC FACILITIES

DORMAC FLOATING DOCK 1



Addressed to
SOUTHEY HOLDINGS
SOUTHEY HOLDINGS
INVESTORS IN EXCELLENCE

DORMAC
MARINE & ENGINEERING

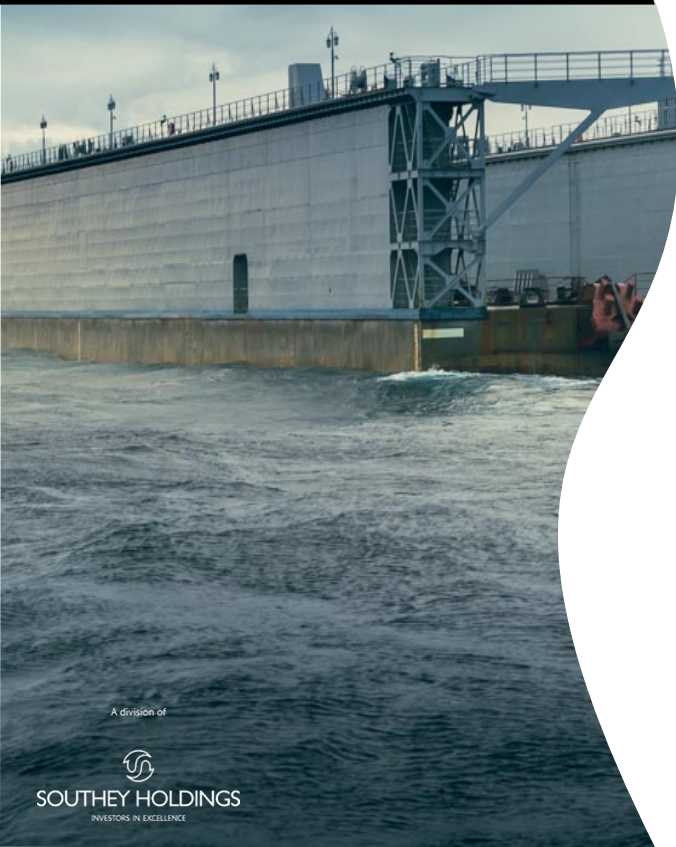


TWO FLOATING DOCKS – EACH WITH FOLLOWING CAPACITY

- **Lifting capacity** 8500 Tonne
- **Length overall** 155 Metres
- **Breadth between wing walls** 26 Metres
- **Maximum submersion depth** 7 Metres
- **Two Cranage** 7.5 Tonne at 16 Metres

TWO PRIVATE FLOATING DOCKS

DORMAC FLOATING DOCK 1



A division of

SOUTHEY HOLDINGS
INVESTORS IN EXCELLENCE

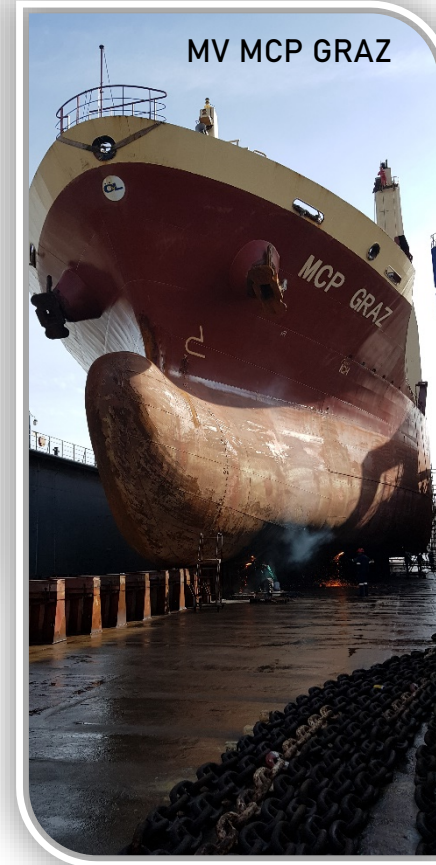
 **DORMAC**
MARINE & ENGINEERING



MV SOLUTION



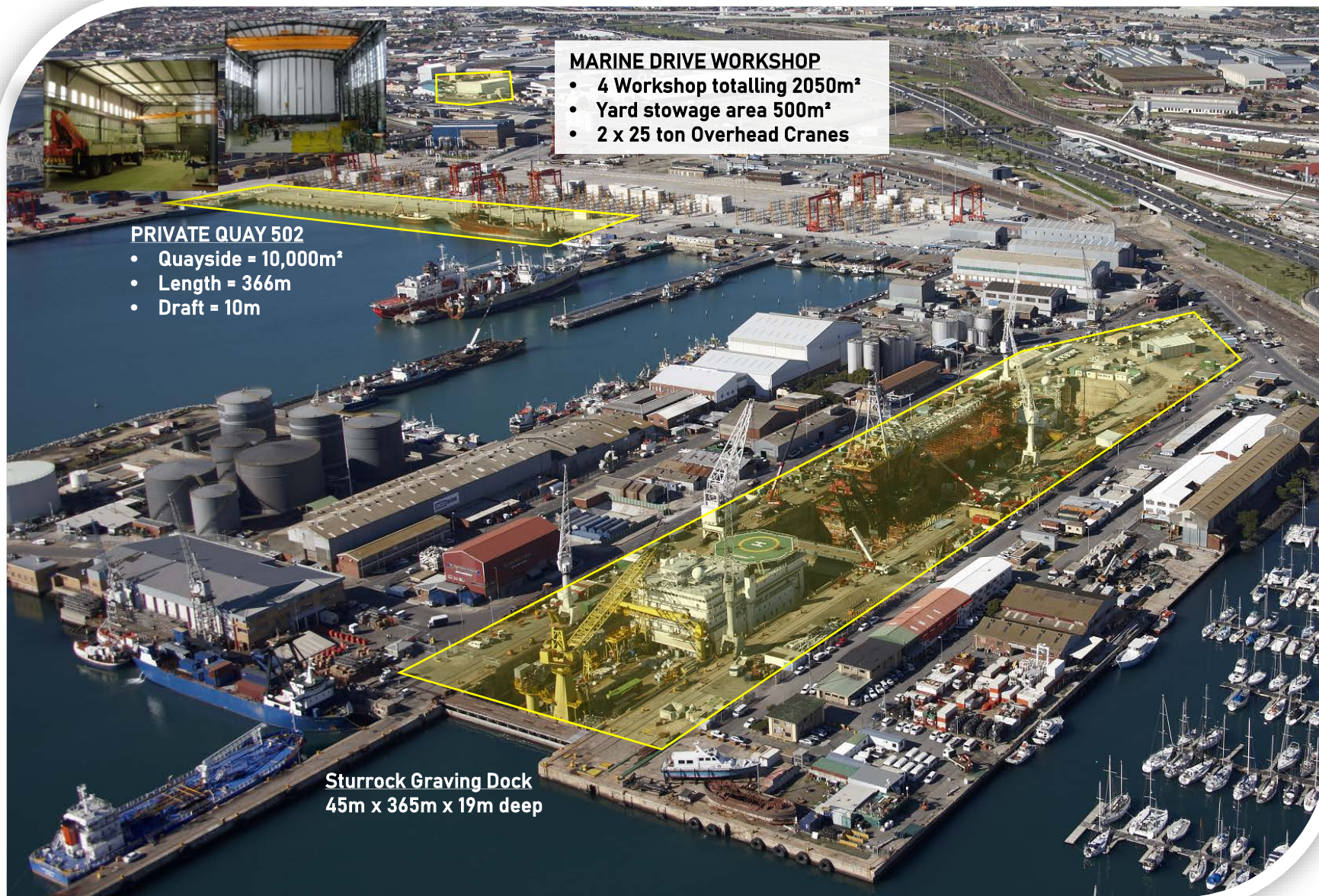
MT AZERI GAS



MV MCP GRAZ

TWO PRIVATE FLOATING DOCKS

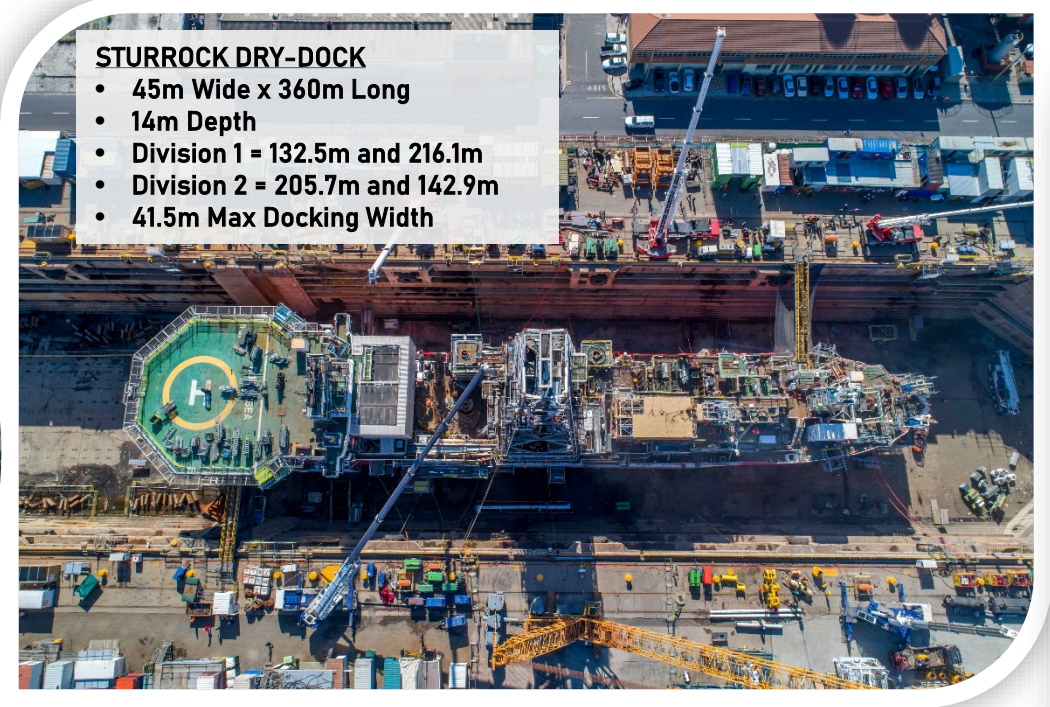
CAPE TOWN FACILITIES



CAPE TOWN

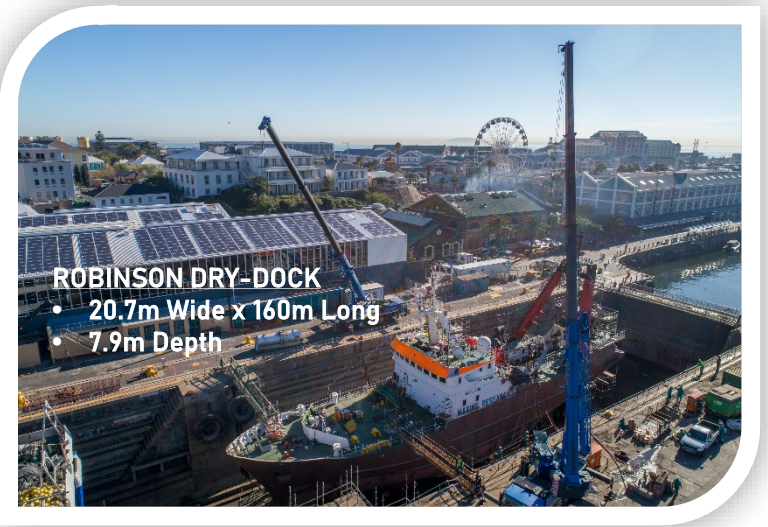


A division of
SOUTHEY HOLDINGS
INVESTORS IN EXCELLENCE



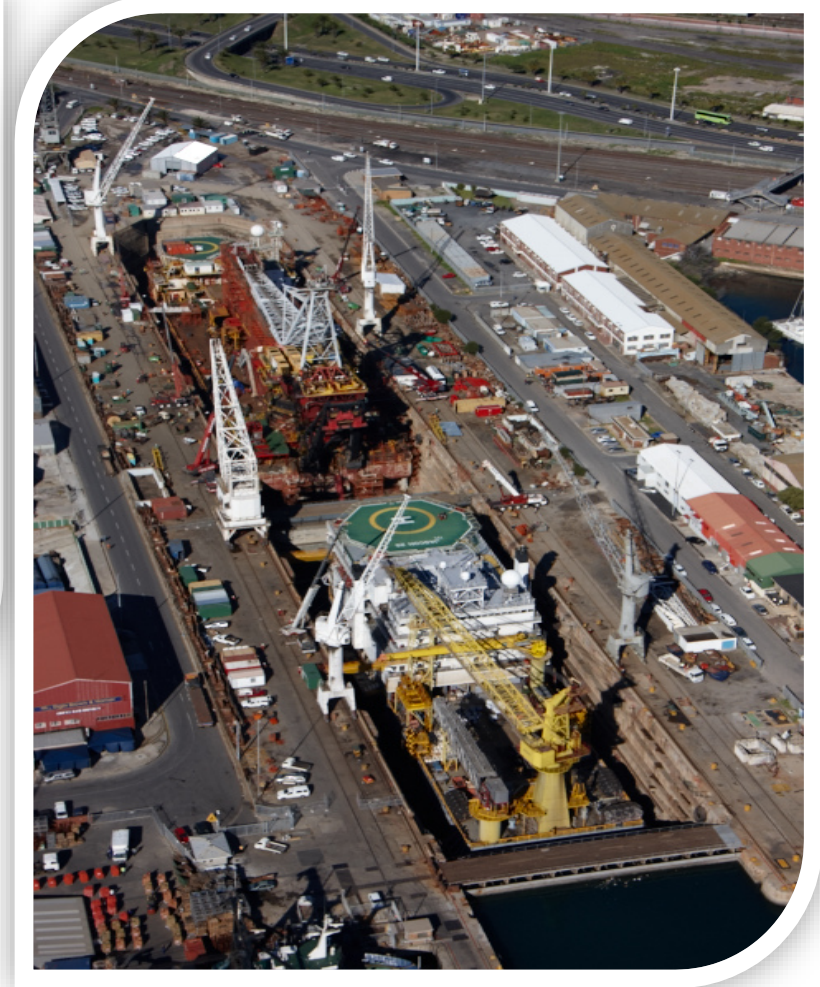
STURROCK DRY-DOCK

- 45m Wide x 360m Long
- 14m Depth
- Division 1 = 132.5m and 216.1m
- Division 2 = 205.7m and 142.9m
- 41.5m Max Docking Width



ROBINSON DRY-DOCK

- 20.7m Wide x 160m Long
- 7.9m Depth



SEVEN POLARIS PROJECT WORK SCOPE SUMMARY



A division of



SOUTHEY HOLDINGS
INVESTORS IN EXCELLENCE



6,000 m PIPE WORK
210 TON STEELWORK
12,000m² BLAST & PAINT
95 MOTOR O/H (1,400KW)



INSTALLATION OF 120 TON WINCH INC.
RENEWAL OF WOODEN FENDERS &
EXHAUSTS

SALDANHA BAY



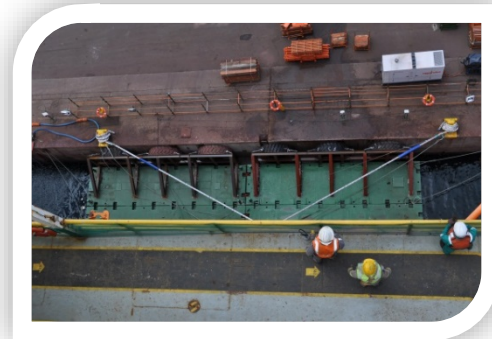
- Quayside 15m draft.
- Up to 1000 ton mobile crane.
- Quayside loading of 20 tons/m².
- Favourable weather conditions.
- 50,000 m² of quayside and laydown area.
- 120 km from Cape Town (80 minute drive).
- 128 km from Cape Town International airport.
- Town accommodation capacity for over 2,000 people.



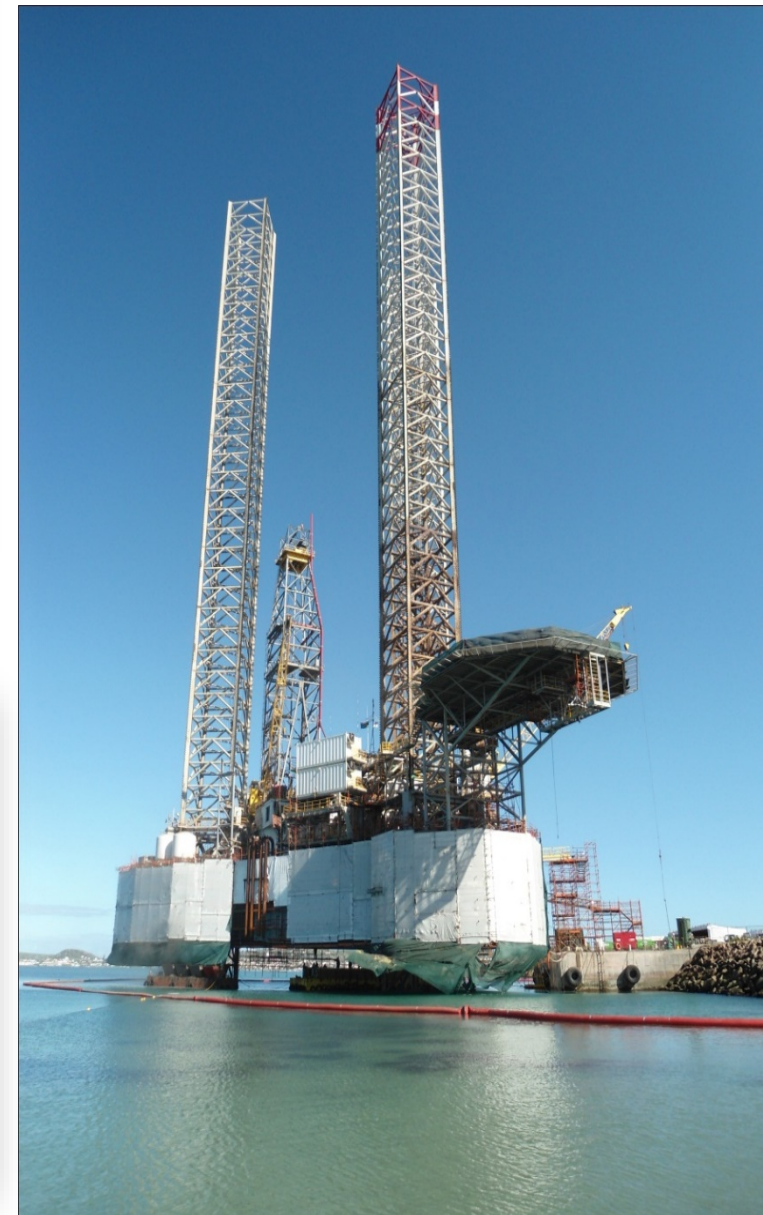
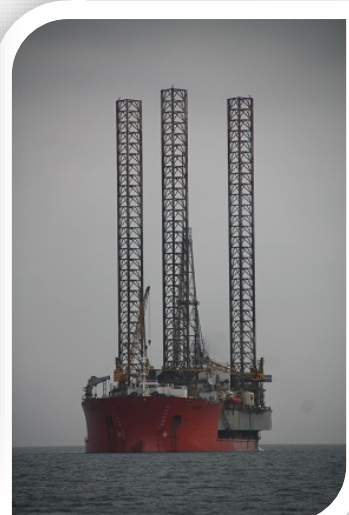
SALDANHA BAY



- QUAY 204 – 250m LONG X 15m DRAFT
- SHELTERED BAY FOR HEAVY LIFT VESSELS
- QUAYSIDE LOADING = 15 TONS/M²



SALDANHA BAY



PORT OF NQUERA COEGA

18m draft quay 265m
length
SA's newest port.



A division of
SOUTHEY HOLDINGS
INVESTORS IN EXCELLENCE

DORMAC
MARINE & ENGINEERING



REPAIR QUAY AT COEGA

PORT OF NQUERA COEGA



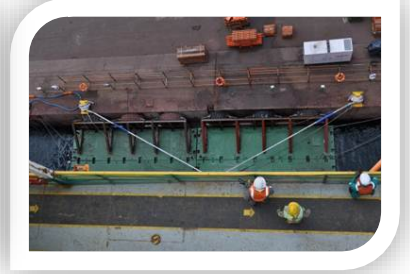
A division of
SOUTHEY HOLDINGS
INVESTORS IN EXCELLENCE



Typical Quayside Site Establishment



Fender barges for Semi-Subs



NEW GENERATION SEMI-SUBS IN COEGA

PORT OF NQUERA COEGA



A division of

SOUTHEY HOLDINGS
INVESTORS IN EXCELLENCE



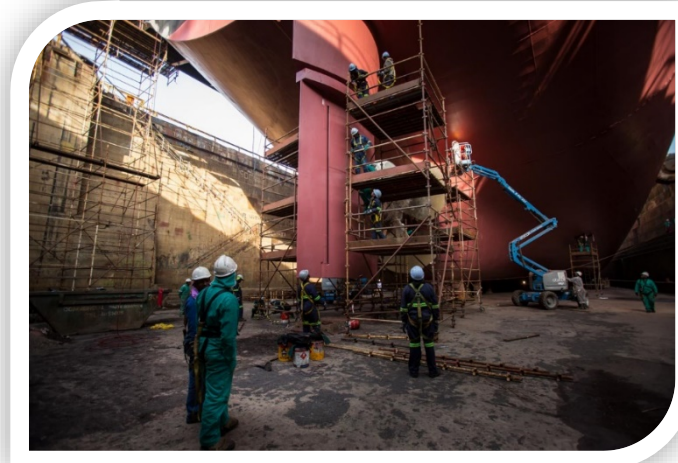
 **DORMAC**
MARINE & ENGINEERING



NEW GENERATION DRILL SHIPS IN COEGA

DORMAC GROUP

- Steelwork
- HP & LP Pipe work
- Mechanical works
- Machining
- Electrical
- Blasting & coating
- Diving services
- New Building & Fabrications
- Dry Docking
- Shop Outfitting
- Cofferdams
- Fabrications – Industrial
- Subsea Structures
- Surveys & Inspections



A division of

SOUTHEY HOLDINGS
INVESTORS IN EXCELLENCE

 **DORMAC**
MARINE & ENGINEERING



IN-HOUSE CORE SERVICES

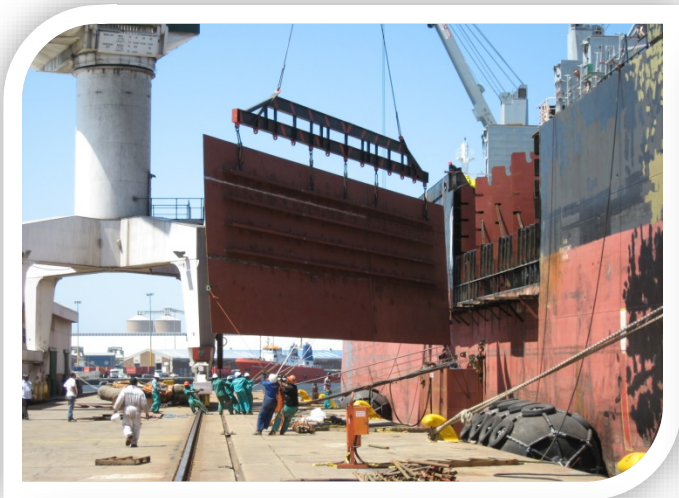
STEEL & PIPE FABRICATIONS



A division of


SOUTHEY HOLDINGS
INVESTORS IN EXCELLENCE

 **DORMAC**
MARINE & ENGINEERING



HP PIPING - XXS GR4130



FABRICATIONS

UNDERWATER SERVICES



A division of


SOUTHEY HOLDINGS
INVESTORS IN EXCELLENCE

 **DORMAC**
MARINE & ENGINEERING



Diving Services

- Maintenance & salvage
- Hull cleaning & propeller polish
- Class Approved UWILD Surveys
- Underwater welding repairs

Cofferdam Technology

- Purpose designed
- 100% success record
- Classification approved

Types of Cofferdams

- Spade / Skeg Type
- Hull Type
- Stern Tube Type
- Bow Thrusters
- Flexi dam (mobile)

Class Approved

- RINA
- DNV/ GL
- BV
- LR
- ABS
- Class NK

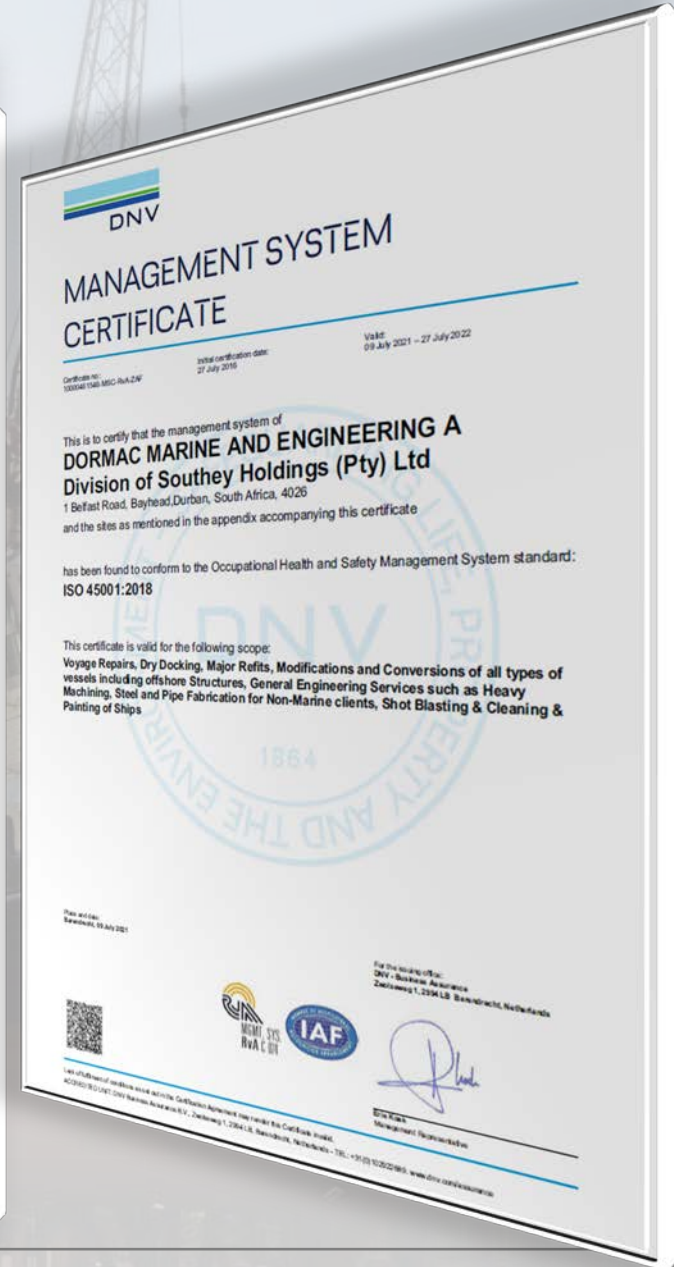
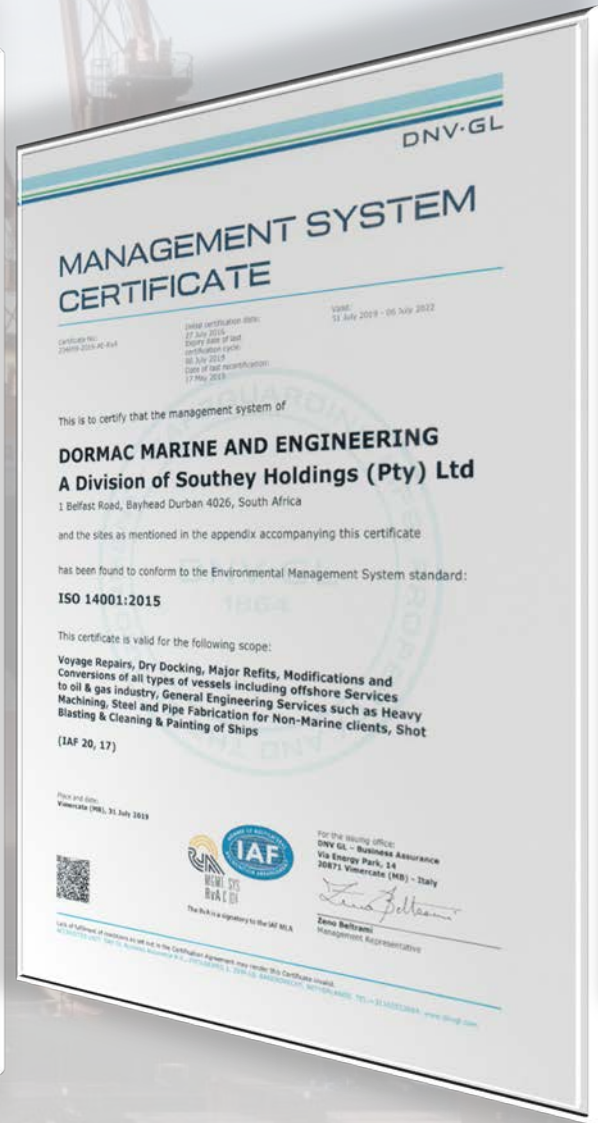


DIVING & UNDER WATER SOLUTIONS

SHEQ CERTIFICATION



A division of



DNV CERTIFICATION : 9001:2015 – 14000 – 45000

DORMAC

MARINE & ENGINEERING



THANK YOU

A division of



SOUTHEY HOLDINGS
INVESTORS IN EXCELLENCE

YOUR 24/7 ONE STOP SHIP REPAIR PARTNER IN SOUTHERN AFRICA